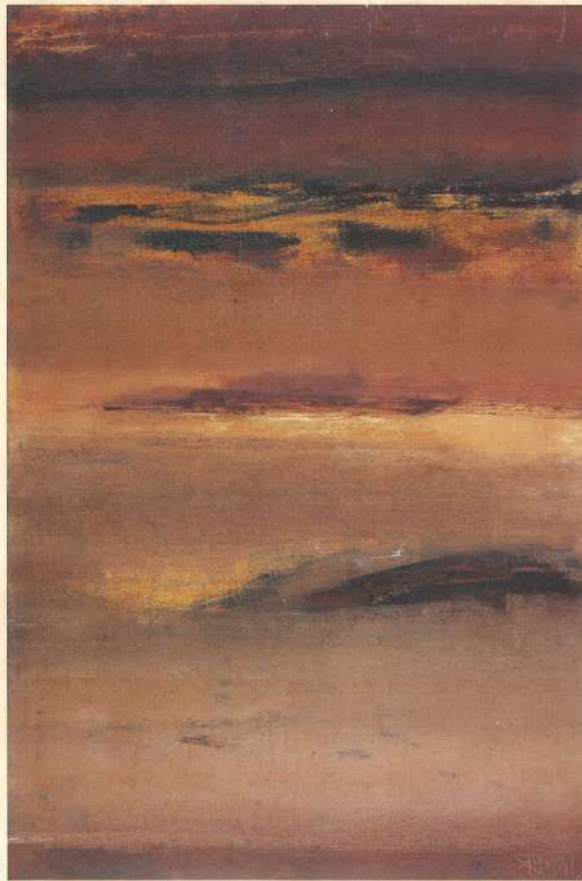


2009



Prafulla Dahanukar,
Untitled, Oil on canvas, 60x92 cm, 1987



www.airindia.in



2010

JANUARY						
SUN	MON	TUE	WED	THU	FRI	SAT
31				1	2	
3	4	5	6	7	8	9
10	11	12	13	14	15	16
17	18	19	20	21	22	23
24	25	26	27	28	29	30

FEBRUARY						
SUN	MON	TUE	WED	THU	FRI	SAT
	1	2	3	4	5	6
7	8	9	10	11	12	13
14	15	16	17	18	19	20
21	22	23	24	25	26	27
28						

MARCH						
SUN	MON	TUE	WED	THU	FRI	SAT
	1	2	3	4	5	6
7	8	9	10	11	12	13
14	15	16	17	18	19	20
21	22	23	24	25	26	27
28	29	30	31			

APRIL						
SUN	MON	TUE	WED	THU	FRI	SAT
				1	2	3
4	5	6	7	8	9	10
11	12	13	14	15	16	17
18	19	20	21	22	23	24
25	26	27	28	29	30	

MAY						
SUN	MON	TUE	WED	THU	FRI	SAT
30	31				1	
2	3	4	5	6	7	8
9	10	11	12	13	14	15
16	17	18	19	20	21	22
23	24	25	26	27	28	29

JUNE						
SUN	MON	TUE	WED	THU	FRI	SAT
	1	2	3	4	5	
6	7	8	9	10	11	12
13	14	15	16	17	18	19
20	21	22	23	24	25	26
27	28	29	30			

JULY						
SUN	MON	TUE	WED	THU	FRI	SAT
				1	2	3
4	5	6	7	8	9	10
11	12	13	14	15	16	17
18	19	20	21	22	23	24
25	26	27	28	29	30	31

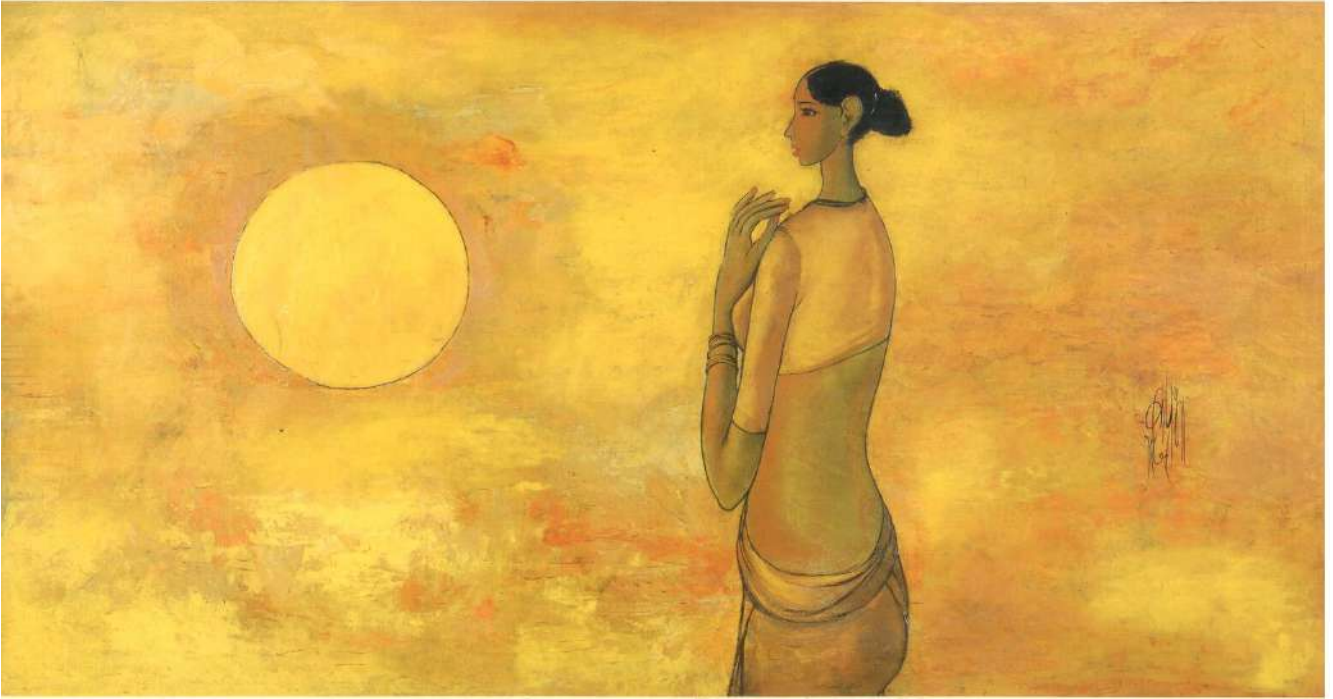
AUGUST						
SUN	MON	TUE	WED	THU	FRI	SAT
1	2	3	4	5	6	7
8	9	10	11	12	13	14
15	16	17	18	19	20	21
22	23	24	25	26	27	28
29	30	31				

SEPTEMBER						
SUN	MON	TUE	WED	THU	FRI	SAT
		1	2	3	4	
5	6	7	8	9	10	11
12	13	14	15	16	17	18
19	20	21	22	23	24	25
26	27	28	29	30		

OCTOBER						
SUN	MON	TUE	WED	THU	FRI	SAT
31				1	2	
3	4	5	6	7	8	9
10	11	12	13	14	15	16
17	18	19	20	21	22	23
24	25	26	27	28	29	30

NOVEMBER						
SUN	MON	TUE	WED	THU	FRI	SAT
	1	2	3	4	5	6
7	8	9	10	11	12	13
14	15	16	17	18	19	20
21	22	23	24	25	26	27
28	29	30				

DECEMBER						
SUN	MON	TUE	WED	THU	FRI	SAT
		1	2	3	4	
5	6	7	8	9	10	11
12	13	14	15	16	17	18
19	20	21	22	23	24	25
26	27	28	29	30	31	



B.Prabha, Sunrise, Oil on canvas, 63x34 cm, 1979

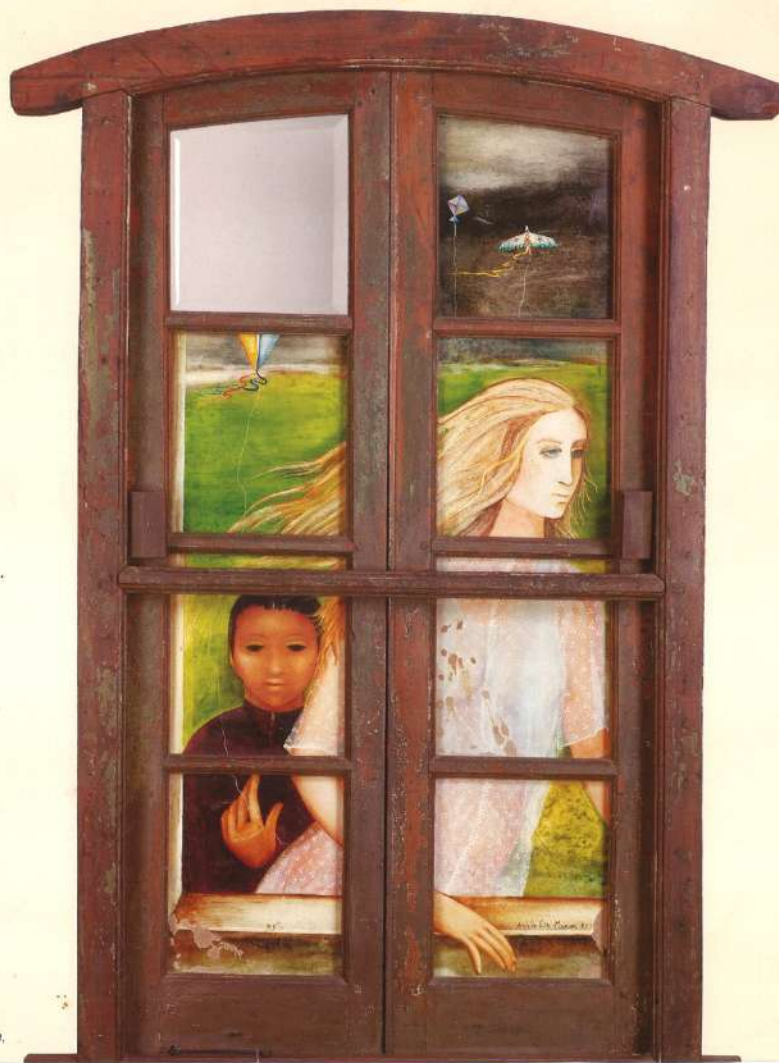
जनवरी
JANUARY

2009

फरवरी
FEBRUARY

रवि SUN	सोम MON	मंगल TUE	बुध WED	गुरु THU	शुक्र FRI	शनि SAT	रवि SUN	सोम MON	मंगल TUE	बुध WED	गुरु THU	शुक्र FRI	शनि SAT
				1	2	3	1	2	3	4	5	6	7
4	5	6	7	8	9	10	8	9	10	11	12	13	14
11	12	13	14	15	16	17	15	16	17	18	19	20	21
18	19	20	21	22	23	24	22	23	24	25	26	27	28
25	26	27	28	29	30	31							





Anjolie Ela Menon, *Inside Outside*, Painted Panel, 107x160 cm, 1983

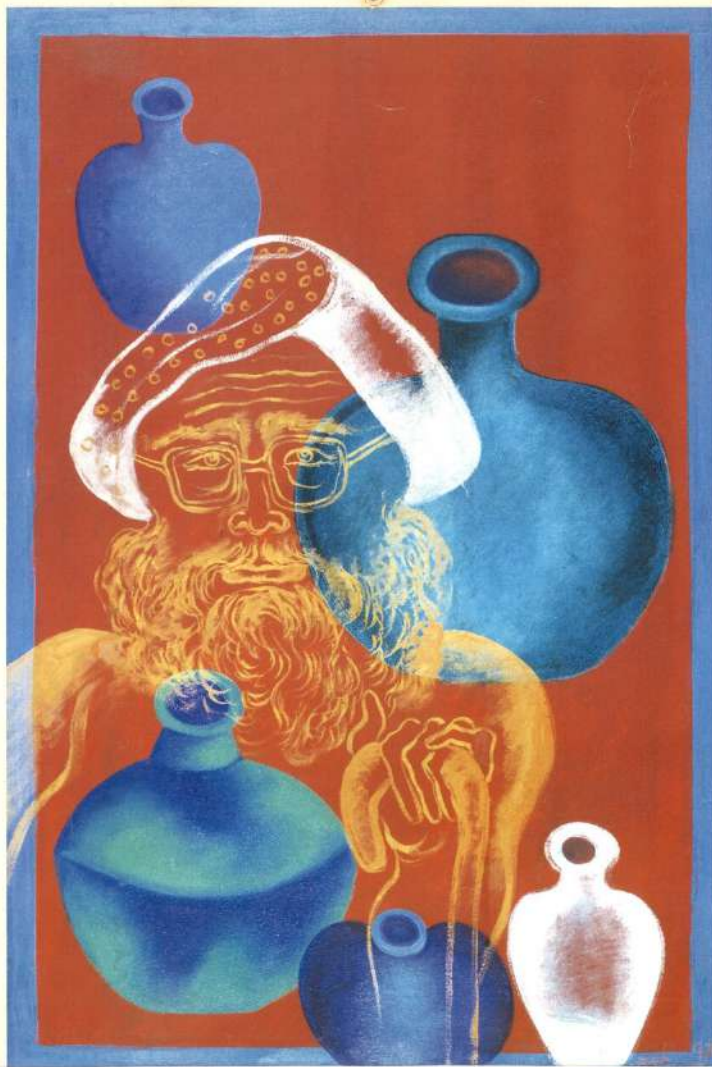
मार्च
MARCH

2009

अप्रैल
APRIL

रवि SUN	सोम MON	मंगल TUE	बुध WED	गुरु THU	शुक्र FRI	शनि SAT	रवि SUN	सोम MON	मंगल TUE	बुध WED	गुरु THU	शुक्र FRI	शनि SAT
1	2	3	4	5	6	7				1	2	3	4
8	9	10	11	12	13	14	5	6	7	8	9	10	11
15	16	17	18	19	20	21	12	13	14	15	16	17	18
22	23	24	25	26	27	28	19	20	21	22	23	24	25
29	30	31					26	27	28	29	30		





Arpana Caur, Potter becomes Pot,
Oil on canvas, 55 x 84 cm, 1997

मई
MAY

2009

जून
JUNE

रवि SUN	सोम MON	मंगल TUE	बुध WED	गुरु THU	शुक्र FRI	शनि SAT	रवि SUN	सोम MON	मंगल TUE	बुध WED	गुरु THU	शुक्र FRI	शनि SAT
31					1	2	1	2	3	4	5	6	
3	4	5	6	7	8	9	7	8	9	10	11	12	13
10	11	12	13	14	15	16	14	15	16	17	18	19	20
17	18	19	20	21	22	23	21	22	23	24	25	26	27
24	25	26	27	28	29	30	28	29	30				



www.airindia.in





Milburn Cherian, *Untitled*, Acrylic on canvas, 106x57 cm, 2005

जुलाई
JULY

2009

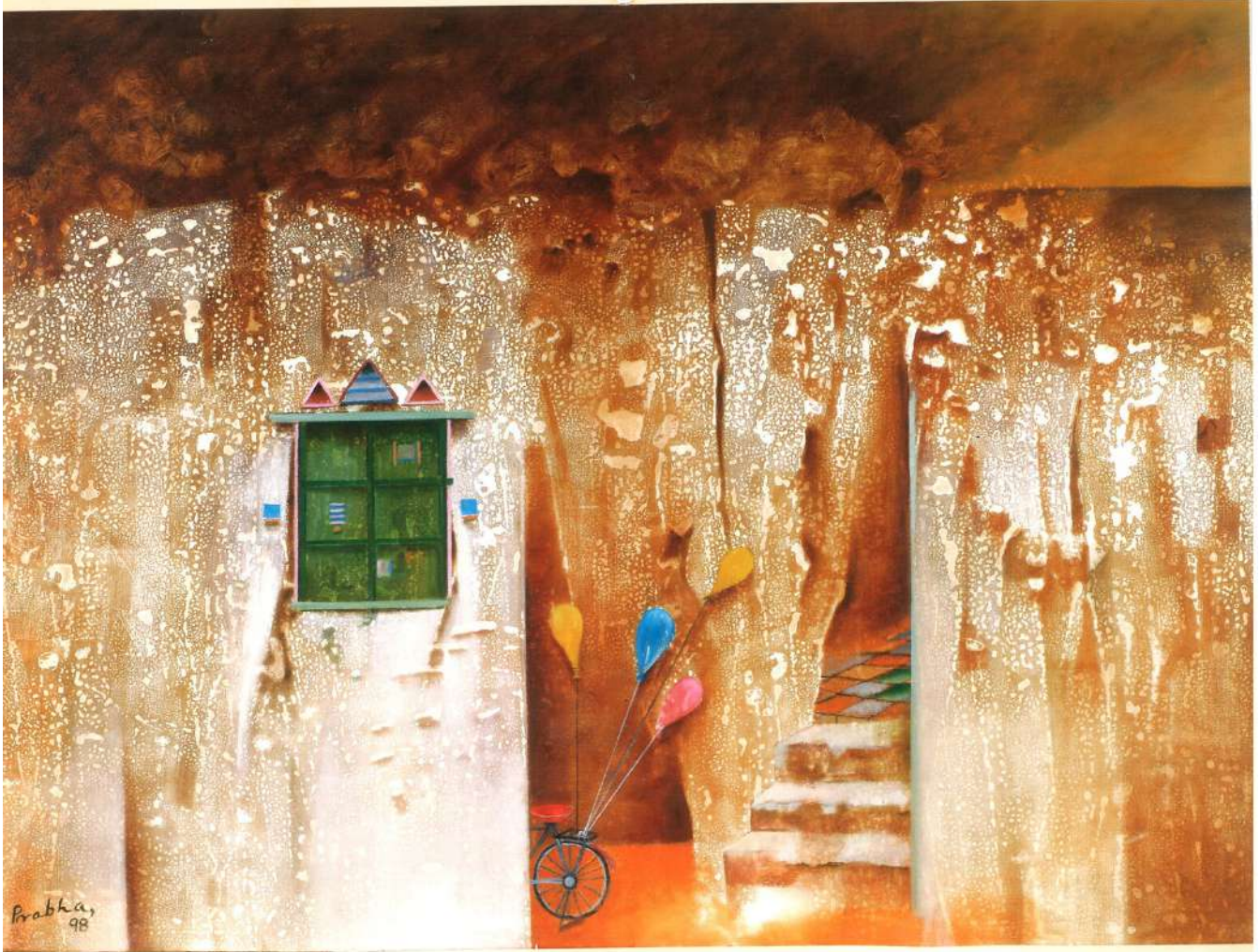
अगस्त
AUGUST

रवि SUN	सोम MON	मंगल TUE	बुध WED	गुरु THU	शुक्र FRI	शनि SAT	रवि SUN	सोम MON	मंगल TUE	बुध WED	गुरु THU	शुक्र FRI	शनि SAT
			1	2	3	4	30	31					1
5	6	7	8	9	10	11	2	3	4	5	6	7	8
12	13	14	15	16	17	18	9	10	11	12	13	14	15
19	20	21	22	23	24	25	16	17	18	19	20	21	22
26	27	28	29	30	31		23	24	25	26	27	28	29



www.airindia.in





Prabha Shah, Happy Times Are Here Again, Oil on canvas, 117x87 cm, 1998

सितम्बर
SEPTEMBER

2009

अक्तुबर
OCTOBER

रवि SUN	सोम MON	मंगल TUE	बुध WED	गुरु THU	शुक्र FRI	शनि SAT
------------	------------	-------------	------------	-------------	--------------	------------

		1	2	3	4	5
6	7	8	9	10	11	12
13	14	15	16	17	18	19
20	21	22	23	24	25	26
27	28	29	30			

रवि SUN	सोम MON	मंगल TUE	बुध WED	गुरु THU	शुक्र FRI	शनि SAT
------------	------------	-------------	------------	-------------	--------------	------------

				1	2	3
4	5	6	7	8	9	10
11	12	13	14	15	16	17
18	19	20	21	22	23	24
25	26	27	28	29	30	31



www.airindia.in





नवम्बर
NOVEMBER

2009

दिसम्बर
DECEMBER

रवि SUN	सोम MON	मंगल TUE	बुध WED	गुरु THU	शुक्र FRI	शनि SAT	रवि SUN	सोम MON	मंगल TUE	बुध WED	गुरु THU	शुक्र FRI	शनि SAT
1	2	3	4	5	6	7			1	2	3	4	5
8	9	10	11	12	13	14	6	7	8	9	10	11	12
15	16	17	18	19	20	21	13	14	15	16	17	18	19
22	23	24	25	26	27	28	20	21	22	23	24	25	26
29	30						27	28	29	30	31		



www.airindia.in





Prafulla Dehanurkar, one of the most senior women artists in India, graduated in Fine Arts from the Sir JJ School Of Art, Mumbai, winning a Gold Medal.

Prafulla has made a substantive contribution to the art movement in India. Although a recognized painter, she has to her credit many murals in a variety of media, like ceramics, fibreglass, wood & glass. She has participated in several international exhibitions and also served on several Art Societies and Institutions for the last 4 decades.



B. Prabha (1933-2001) was a major Indian artist who worked mainly in oil, in an instantly recognizable style. She started working at a time when India had few women artists. Her inspiration was Amrita Sher-Gil. She is best known for her graceful elongated figures of sensitive rural women in the Indian landscape. The serene bodies of B. Prabha's women were not born out of an exhibitionistic concern, but out of confidence in their intrinsic worth.



Anjolie Ela Menon, one of India's leading contemporary women artists, was awarded the Padma Shree in 2000 and Chevalier des Arts et des Lettres in 2007.

She started painting very early and was drawn to the works of Modigliani, MF Husain and Amrita Sher-Gil. She has had over forty solo exhibitions in several countries including a six month solo at the Asian Art Museum, San Francisco. She is also a well known muralist. Her works hang in important museums and private collections the world over.



Milburn Cherian's paintings have been described as "not celebratory, yet there are rules of chaos, rules of chance that govern the best of them. Her intricately minutely detailed canvases could easily be titled "Tales of Ajitony Palastokingjy Told".

She says about her paintings "It's about the human condition and if my art is to have any lasting value, it must concern itself from these basics. I find the relationship between historical and contemporary imagery exciting. My work has strong references to biblical imagery which is why despite the desolation written large on their faces, I give them a kind of serenity, almost a pious waiting for deliverance."



Netra Sathe's figurative compositions and use of ceramic on canvas, has received international recognition.

Coming from a family of artists, she started painting at a very young age. She captures the colourful life of Rajasthan village folk, their facial expressions and the body stance. She has exhibited her works in India and abroad.



Arpana Caur, exhibiting since 1974, has works in significant collections, in India and abroad, including Victoria and Albert Museum London, Kunst Museum Dusseldorf, Asian Art Museum San Francisco, Museum of Contemporary Art LA, Hiroshima and Singapore Museum and many Indian Museums. She is a recipient of several awards and grants including a Gold Medal in the Sixth Triennale 1985.

"Potter becomes poet" celebrates late Sardar Gulshan Singh, the father of art pottery in India, and his specialisation was blue pottery. She says "He was close to me and would tell me he too was a pot and would become clay one day. All of us do! Besides, the artist is always at one with his creation."



Prabha Shah, deprived of hearing, her loss has been made up amply by enhancement in her powers of imaginative vision. Her truth is her true speech and her work achieves a harmonious balance between naturalistic description and the abstractions of subject, worked out by the creative mind.

The medium of discoloured concrete walls that is evocative of life in a small town fills the canvas, with three colourful balloons tied to the bar of a cycle partly seen behind a wall. As the sole window in the construction is closed, the balloon symbolizes a child's longing to escape into the outdoors.



Shobha Patki's work has seen several stylistic jumps since 1979. She draws from varied sources: nature, mythology, dance & music, which are put on the canvas and moulded into a story. Her paintings show fragments of folklore and religious scriptures floating in abstract compositions, combining figurative elements with abstraction.

Contemporary Paintings by Women Artists of India

In 75 years of its existence, Air India has served the nation not only by linking every corner of India to the far corners of the world but also acting as one of India's foremost cultural ambassadors.

As the national carrier, Air India has, over the years, played a pivotal role in promoting Indian art and culture through its offices in India and all over the world. It's impressive art collection, which has grown substantially over the decades, includes paintings, artefacts, sculptures to antique clocks and costumes. Some of these masterpieces have been showcased in Air India's calendars, posters, covers of in-flight menu cards, timetables, portfolios used as giveaways and other publicity items. Often, these have become sought-after collectors' items.

This year's calendar, showcases the paintings of prominent Indian women artists from Air India's collection.

Growing up in the last stages of the struggle for Independence, women often felt they could not express themselves as they pleased. Their efforts to overcome that constraint led to their subjects ruling the earth, swimming across oceans, singing to birds, and spreading sunshine and colour.

In the 60 years following India's independence, the world had changed drastically, and with that, the imagery in the work of the women artists. Arpana Caur encapsulated this when she said, "In the 1970s, women and interiors was my theme. I depicted the isolation of individuals in a city. Later, when the sheltered woman sought the support of an umbrella, she was the image of socio-economic realities. Subsequently, woman becomes the metaphor for nature. But if harvest manifests plenty, forces within nature also destroy. When a woman emerged in the world outside her home, there were traffic snarls, environmental pollution, communal violence...."

The selection acquires the flavor of introspection with Anjolie Ela Menon and Milburn Cherian. It is evident that each artist asserts herself distinctly as the mood ranges from the fantastical, to the coolly cerebral.

Through this calendar, which portrays the works of Indian Women Artists, Air India salutes not just Indian women but all womankind.



Shobha Patki, Siesta, Mixed media, 60 x 112 cm, 1985