

Escape from the City

DON'T YOU LONG, when the heat and turmoil of the city becomes unbearable, to get away from it all—to visit the cool beauty spots of our country, where the air is always fresh and clean... where Nature herself restores tired spirits?

It's so easy to escape! No matter how short the time you can spare for a vacation, flying makes sure you enjoy every precious moment!

IAC takes the tedium out of travel

No need for long, tiring land journeys that spoil half the fun of your trip. A few luxurious hours in a swift IAC plane take you away from your

worries, close to your holiday place.

And flying by IAC is amazingly economical! You are taken to and from the airport by luxury bus; your luggage is handled and loaded by IAC staff—and delicious refreshments are served en route. And you do not have to pay anything extra for these!

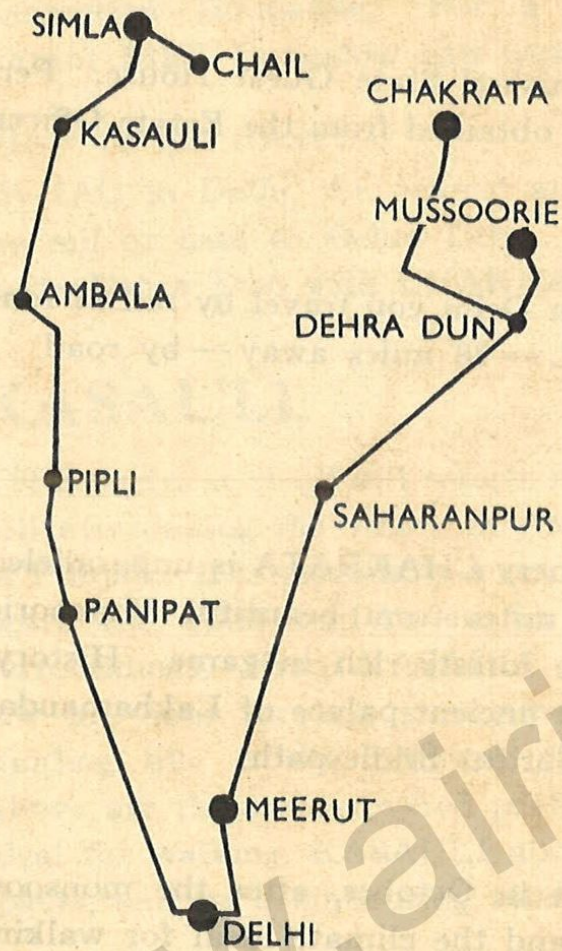
Make your choice now

Each beautiful hill station has its own best season—the time when it is gayest or greenest or coolest. That's why we give you here details of many hill stations. You make your choice—then contact IAC for full details of how to get there!

IA C'S GUIDE TO INDIA'S HILL STATIONS

CONTENTS

Place	Page	Place	Page
ALMORA	10	MAHABALESHWAR	17
CHAIL	3	MATHERAN	18
CHAKRATA	4	MOUNT ABU	19
COONOR	13	MUSSOORIE	5
DALHOUSIE	7	NAINI TAL	11
DARJEELING	21	OOTACAMUND	15
DHARMSALA	8	RANIKHET	12
KASAULI	5	SHILLONG	20
KODAIKANAL	16	SIMLA	6
KOTAGIRI	14	SRINAGAR	22
KULU VALLEY	9	IA C OFFICE ADDRESSES	23

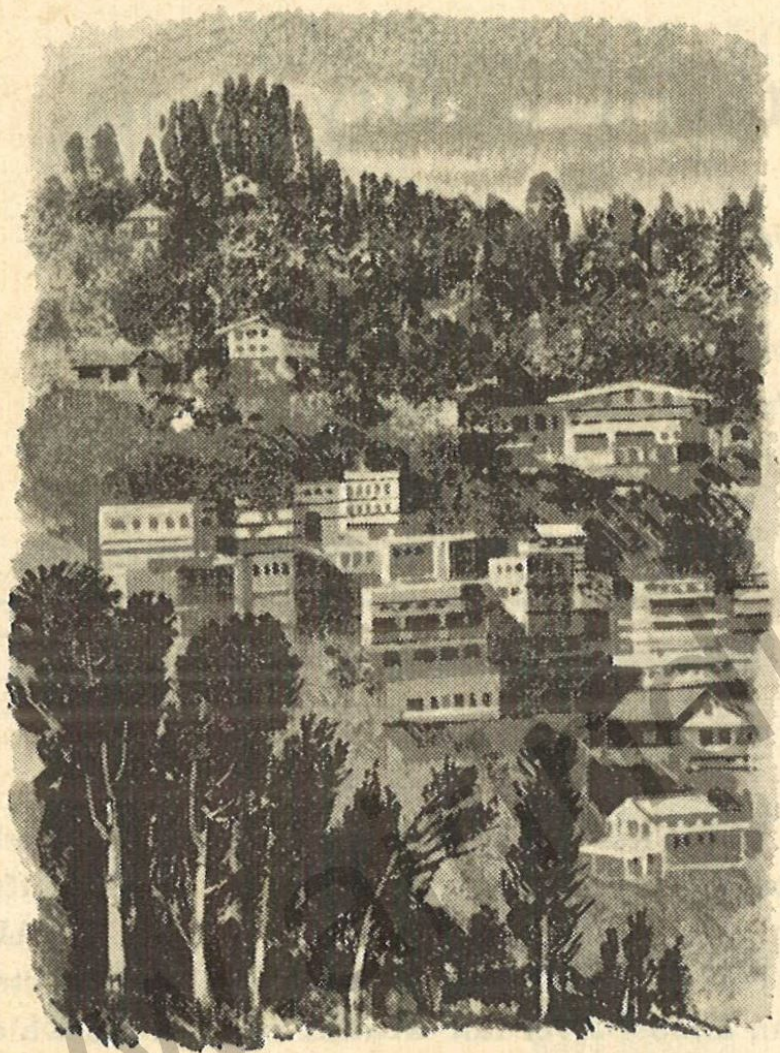


Northern beauty spots

Delhi Airport serves more than one northern hill station — in fact, it offers a choice of five of the loveliest of Northern India's holiday spots. Chail, Chakrata, Kasauli, Mussoorie and Simla all lie within easy reach of Delhi.

CHAIL

CHAIL boasts that its cricket pitch, fringed by stately chinars, is probably the highest in the world! A delightful little hill station, it is ideal for quiet holiday-making. CHAIL lies on a ridge covered with thick forests, and is connected with Simla by an almost level fair-weather motor road which passes along the Chini Bungalow and joins the Hindustan-Tibet road near Kufri Bazaar.



General View of Mussoorie

Season:

March to June. Cool days and nights.

Accommodation:

CHAIL has a lavishly furnished State Guest House. Permission to stay in it can be obtained from the Estate Officer, Pepsu, Patiala.

How to get there:

Fly by IAC to *Delhi*. From Delhi you travel by rail or road to Simla, and on to CHAIL — 28 miles away — by road.

CHAKRATA

FOR natural, unspoiled scenery CHAKRATA is unparalleled. It lies 6,900 feet up — 21 miles from beautiful Mussoorie, and is surrounded by huge forests rich in game. History-lovers will wish to visit the ancient palace of Lakhamandal, 23 miles away along a beautiful bridle-path.

Season:

CHAKRATA is at its best in October, after the monsoon. The air is fresh and cool, and the climate ideal for walking and hunting; there are panthers, black bears and many other varieties of wild game in the surrounding forests.

Accommodation:

For a short stay, the Dak Bungalow or the MES Inspection Bungalow. For a longer holiday, a vacant MES Bungalow can usually be obtained.

How to get there:

By IAC to *Delhi*, the nearest airport. From there, by rail or road to Dehra Dun. A bus service connects Dehra Dun with CHAKRATA.

KASAULI

THIS prettiest of all hill resorts is 6,322 feet up on a hill overlooking the valley of Kalka and the plains of Punjab. It is essentially a resort for those seeking peace and quiet, and its charm lies in its relaxing surroundings. From KASAULI, the vast plains below are seen through a summer haze, the Sutlej winding like a silver thread through the valley. Above are the snow-covered peaks of Dhauladhar. Ideal for walking, KASAULI abounds in wide open spaces, and its neighbouring villages are enchanting.

Season:

March to June. The air is always fresh and pure,

and warm clothing is necessary.

Accommodation:

There is one hotel and a Club. Accommodation should be booked in advance.

How to get there:

Fly by IAC to *Delhi*. You take a train to Kalka and travel on from there to KASAULI by bus or taxi. The road from Delhi to KASAULI—via Ambala, Chandigarh and Kalka—is good if you feel like completing your journey entirely by road.

MUSSOORIE

PROBABLY the most famous hill resort in India, gay MUSSOORIE lies 6,580 feet up on the slopes of the Southern Himalayas. On a clear day, the Ganges and Yamuna can be seen winding their silvery way through the incomparable Doon Valley, 4,000 feet below.

MUSSOORIE boasts thirteen tennis courts, and tennis tournaments are held during the summer. Panther, bear and wild fowl attract the shikar and

there are innumerable beautiful walks and picnic spots — particularly the famous **Kempter Falls**.

Season:

MUSSOORIE is most pleasant between April and July, and from the middle of September to the middle of October. In Springtime, the whole hillside is covered with a mass of wild flowers. Dances, poetry symposia, plays and beauty competitions are held during the season — and the skating rink delights the young. The shikar season is from October to February.

Accommodation:

There are many first-class hotels, and several excellent restaurants.

How to get there:

By IAC to *Delhi*, the nearest airport. A train takes you on to Dehra Dun, and from there you can cover the 22 miles to MUSSOORIE by bus or taxi, or you can travel direct from *Delhi* to MUSSOORIE by bus.

SIMLA

FORMER summer capital of the Government of India, beautiful SIMLA lies nearly 7,000 feet above sea level in the foothills of the Himalayas.

During the summer months, you enjoy hiking, riding, tennis, golf and other sports — in the midst of matchless scenery. In winter, thrill to the exhilaration of skating, sledging and ski-ing, as the countryside puts on its cloak of snow.

Season:

From March to June, SIMLA is the holiday maker's dream spot — never too hot, and with cool refreshing nights. In October and November, the cool weather brings crisp, invigorating air — preparing for the snow which falls from December to February.

Accommodation:

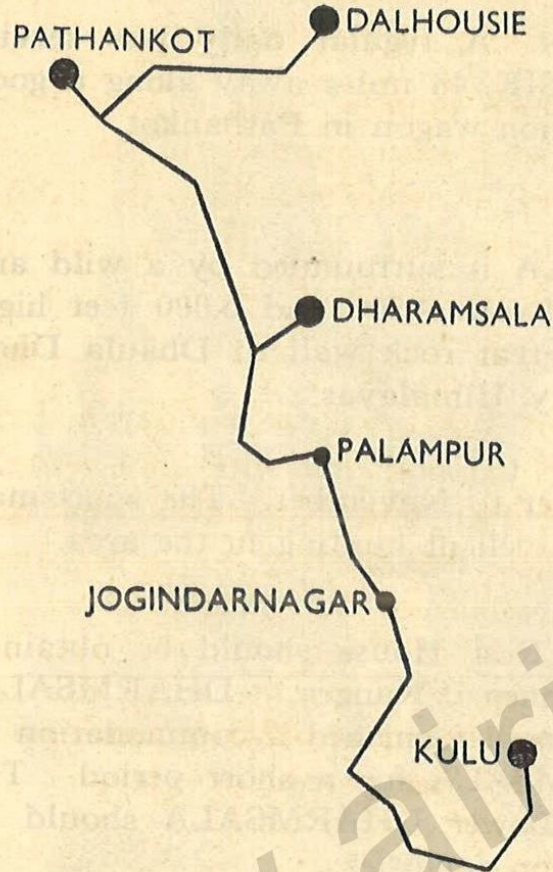
There are several good hotels in SIMLA; rates range from Rs 8/- to Rs 25/- per person per day.

How to get there:

Your IAC plane will take you to *Delhi*, the nearest airport. From there you can travel by rail or road to SIMLA itself.

In the far north

Pathankot Airport serves beautiful Dalhousie, Dharamsala and the fabled Kulu Valley — the choice is difficult, for all three hill-stations offer their own very special attractions.

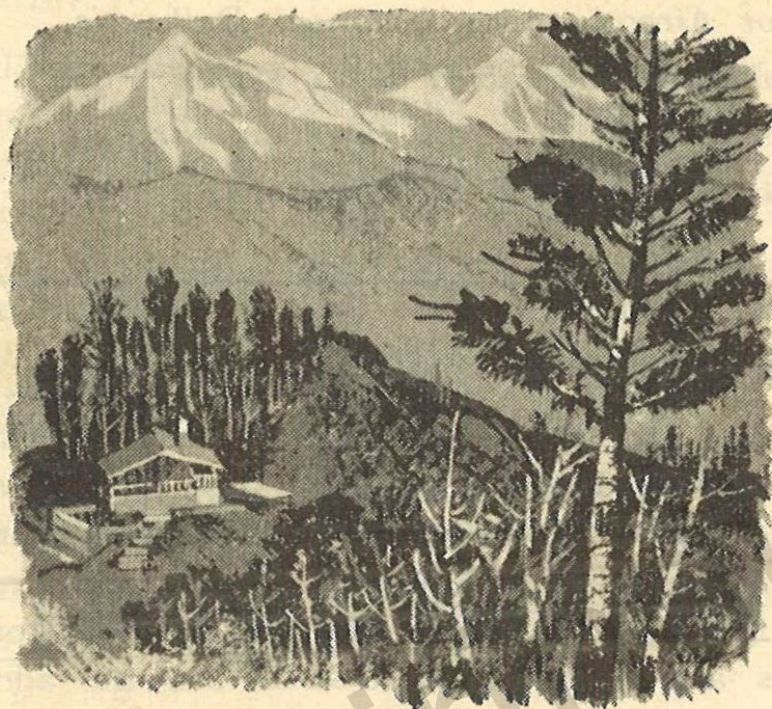


DALHOUSIE

THE hill-station *par excellence*! Quiet and beautiful, DALHOUSIE is situated on the Dhaul Range, the gateway to Chamba, vale of milk and honey with its sparkling springs and impetuous streams. Situated on five hills, ranging from 5,000 to 7,000 feet high, covered with thick forests of oak, conifers, shrubs and herbs, DALHOUSIE has the added advantage of being the cheapest hill resort in India.

Season:

DALHOUSIE is at its best from April to June and September to November. Summer temperatures are between 15.5°C (60°F) and 29.5°C (85°F), and the winter temperature is between 1°C (34°F) and 10°C (50°F).



Dak Bungalow, Dharmsala

Accommodation:

There are several hotels and dak bungalows. Well-furnished houses are available at very low rents.

How to get there:

Fly by IAC to *Pathankot*. A regular daily bus service takes you on to DALHOUSIE, 48 miles away along a good road or you can hire a station wagon in Pathankot.

DHARMSALA

BEAUTIFUL DHARMSALA is surrounded by a wild and picturesque landscape. Between 4,500 and 6,000 feet high, it is over-shadowed by a great rock wall of Dhaula Dhar, while above rise the mighty Himalayas.

Season:

April to June and September to November. The sportsman will be delighted with the excellent hunting in the area.

Accommodation:

Permission to occupy the Rest House should be obtained from the Deputy Commissioner of Kangra at DHARMSALA. It is often possible to get well-furnished accommodation in a house in Upper DHARMSALA for a short period. The District Tourist Office in Lower DHARMSALA should be contacted for accommodation facilities.

How to get there:

By IAC to *Pathankot*. And then a distance of 58 miles to DHARMSALA by bus.



Kulu Valley

KULU VALLEY

'Where could we go?' is a question often asked during the months from June to October. The answer is the wonderful KULU VALLEY, with its magnificent scenery and beautiful, refreshing climate.

Here, the sportsman can indulge in shikar, trout fishing and trekking. The lover of Nature has green highlands, forests, waterfalls and snow-covered mountains on which to feast his eyes.

Season:

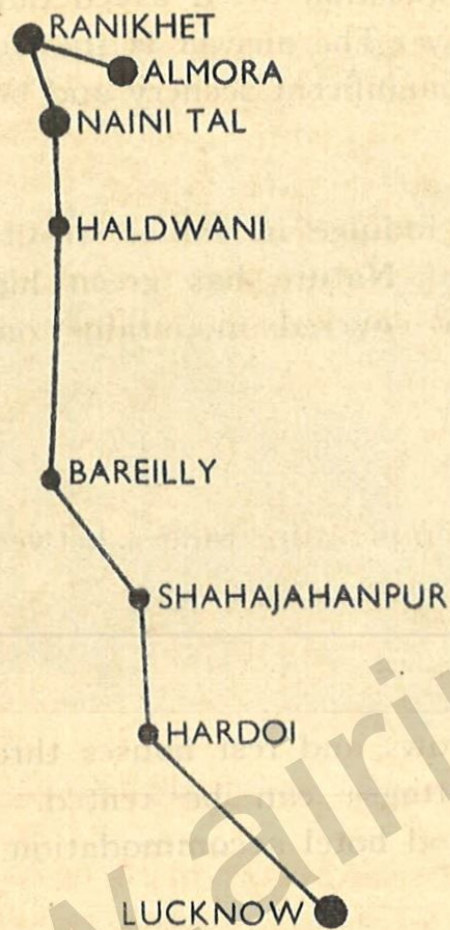
June to October when the temperature ranges between 18°C (64°F) and 30.5°C (87°F).

Accommodation:

There are many dak bungalows and rest houses throughout the valley; comfortable cottages can be rented. Nearby Manali and Katrain offer good hotel accommodation.

How to get there:

Pathankot is the nearest airport, and from there the IAC passenger can proceed by bus or station wagon.



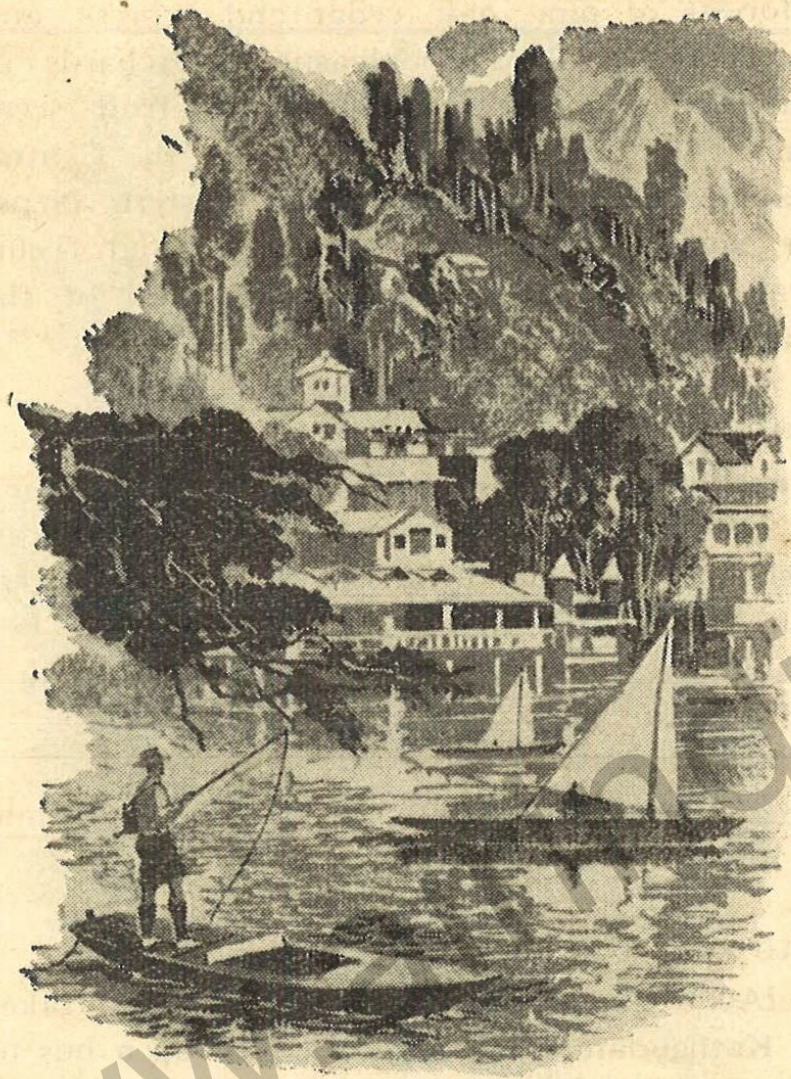
A choice of three

Lucknow, too, is an airport that offers a choice to the intending holiday-maker. He can choose to travel on to Almora, Naini Tal or Ranikhet.

ALMORA

ALMORA is an ancient, compact and picturesque town, founded in 1560 by Raja Kalyan Chand. Surrounded by hills, each with a temple on top, and covered with orchards and thick pine forests, ALMORA gives a wonderful view of the villages in the vicinity. The town has a stone-paved bazaar. You can take a bridle path through jungle scenery to the peak of Binsar, nearly 8,000 ft. high. Round it grows dense alpine forest, ferns, hanging moss and wild flowers.

The Pindar Glacier, 75 miles from ALMORA, is 2 miles long, 3,000 — 4,000 ft. broad and nearly 14,000 feet above



Boat Club, Naini Tal

sea level. The best time to visit it is between May and June, or September and October, when the sky is clearest.

Season:

ALMORA has less rainfall than other places, and there is practically no fog in the monsoon. It has a delightful climate all the year round, and the temperature seldom rises above 31°C (88°F) during the hottest part of the year. Local festivals are Uttarayani at Bageshwar in January; Nanda Devi, August to September, and Jaul-Jibi, the trade fair held on the Indo-Nepalese border on Kartik Purnima.

Accommodation:

Hotel or dak bungalow.

How to get there:

Fly by IAC to *Lucknow*. A train takes you to Kathgodam where you can take a bus or taxi to cover the 82 miles to ALMORA.

NAINI TAL

A hill station with a very special beauty of its own, picturesque NAINI TAL lies 6,336 ft. up in the fabulous lake district of Kumaon. Here, it is the lake which dominates the scene — 1500 ft. long and 500 ft. wide, it offers superb

boating and fishing facilities. Indeed the life of NAINI TAL can be said to revolve round its lovely lake. But there are plenty of opportunities for walking, riding, and trekking too.

Season:

From April to June, and from mid-September to mid-November, NAINI TAL is at her gayest and loveliest. The splendid climate makes sure the visitor enjoys his holiday to the full.

Accommodation:

NAINI TAL offers a number of excellent hotels, with rates ranging from Rs 10/- to Rs 16/- per day.

How to get there:

Your IAC flight takes you to *Lucknow*, the nearest airport. From there, there is a railway to Kathgodam from where you finish your journey by bus or taxi.

RANIKHET

FOR a quiet holiday in a bracing climate and amidst breathtaking scenery, RANIKHET is ideal. It lies 53 miles from Kathgodam, nearly 6,000 feet up on the main Kathgodam-Almora Road. All round are

thick forests of pine, oak, cedar and cypress, and gardens make walking a pleasure. Orchards of luscious apples, pears and other soft fruit scent the air. There are wonderful views of the Central Himalayan range extending from Western Nepal to the snowy heights of Badripath and Tehri Garhwal. Nowhere in India is the view of the Himalayas clearer or more beautiful.

Season:

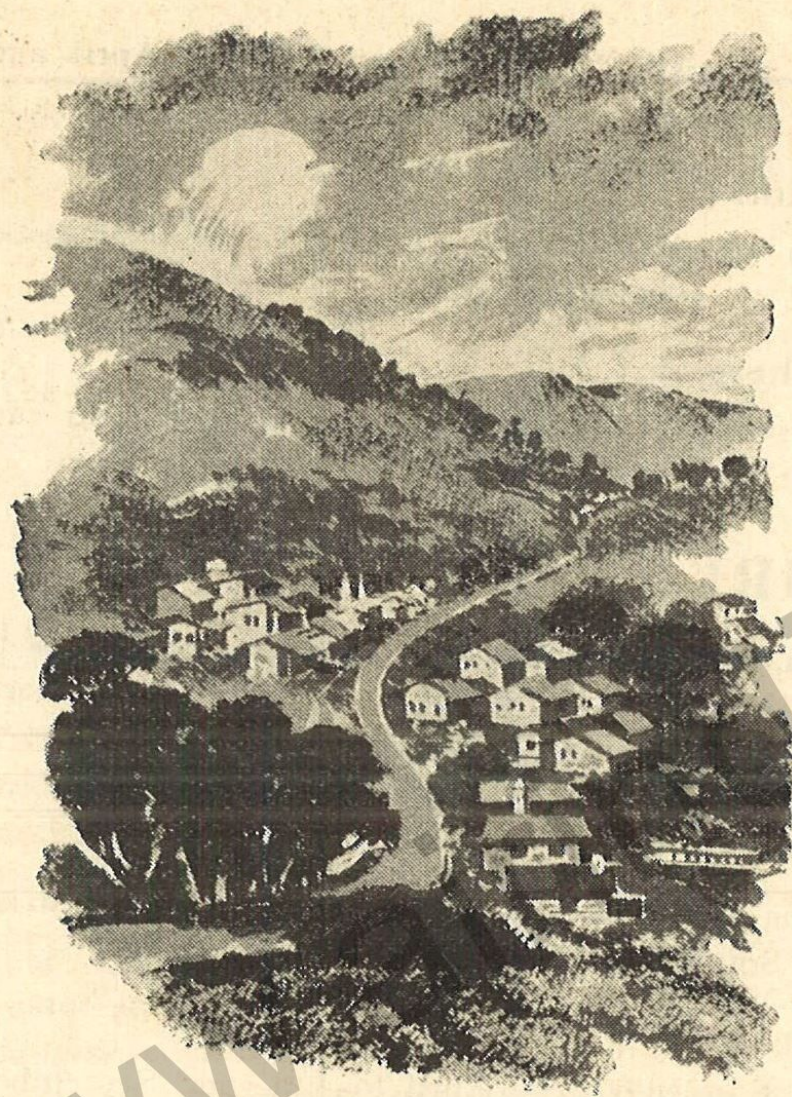
The climate is moderate and dry, and always cool. Nanda Devi is the most important fair of the year. It is held in the month of *Shravan* (August-September), in Almora, RANIKHET and Naini Tal. Excellent facilities are available for polo and golf.

Accommodation:

Hotels, dak bungalows, inspection houses, circuit and forest rest houses — all good and inexpensive.

How to get there:

Fly by IAC to *Lucknow*. From there, the train takes you to Kathgodam where you can pick up a bus or taxi for RANIKHET, 50 miles away along a good motor road.



Wellington View, Ootacamund

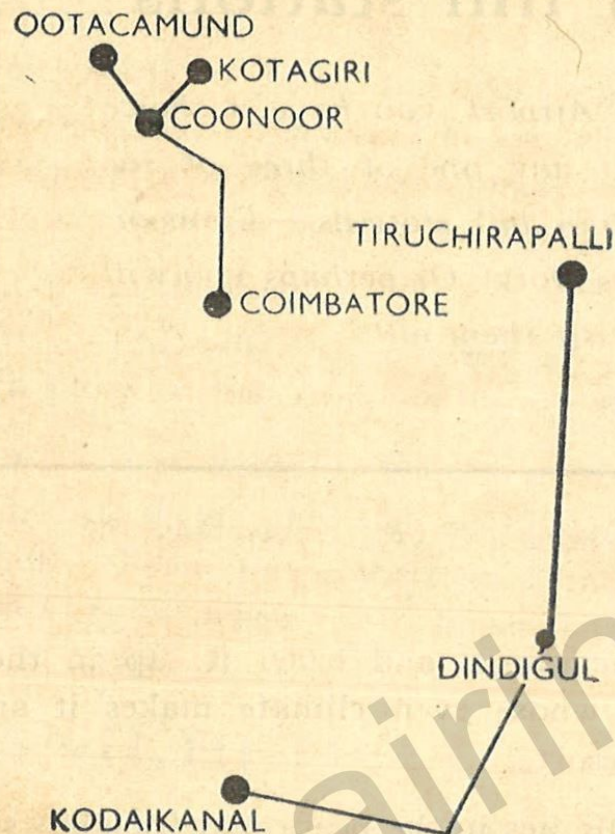
Southern hill stations

FROM Coimbatore Airport, you have a choice of travelling on to any one of three of the loveliest South Indian hill stations — Coonoor, Kotagiri and famous Ooty. Or perhaps you will arrange a tour to visit them all!

COONOOR

Just 12 miles from Ootacamund, and 6,000 ft. up in the Nilgiris, lies COONOOR whose even climate makes it an 'all-the-year-round' hill resort.

The charm of COONOOR lies in the peace and friendliness of its beautiful countryside — in the opportunities it offers the visitor for long, solitary walks and picturesque views. In the heart of the town itself are the beautiful Botanical Gardens, claimed by many to rival those of Ooty.



Season :

The best times to visit COONOOR are between April and June and from September to October.

Accommodation :

There are two excellent hotels, offering extremely good accommodation at reasonable rates.

How to get there :

The nearest airport is *Coimbatore*, and from there you can travel by rail or road to COONOOR, only 40 miles away.

KOTAGIRI

6,500 feet high, on the hills of the evergreen Nilgiris is KOTAGIRI — 'the pearl in the ear of the Nilgiris'. Its scenery is beautiful in the extreme; below are old villages and a breathtaking valley; above, the tea estates... a constant green against a blue sky.

A paradise for golfers, KOTAGIRI boasts one of the finest golf-courses in South India.

Season :

KOTAGIRI is at its best from April to June and September to October.

Accommodation:

There are no hotels in KOTAGIRI, but two guest houses afford comfort to the visitor.

How to get there:

The nearest airport is *Coimbatore*. From there you travel by rail or road to Coonoor, and cover the last 13 miles to KOTAGIRI by road.

OOTACAMUND

ONE of the gayest and liveliest spots in the whole country, lovely OOTACAMUND lies 7,200 ft. up amid the nine hundred square miles of the Nilgiris — the fabulous 'blue hills' of India.

The climate is ideal for everyone — the thermometer seldom rises above 15.5°C (60°F) and seldom falls below 10°C (50°F)! The visitor can enjoy golfing, riding, tennis and, of course, hiking in the magnificent countryside. There are weekly races during the

season, and the idyllically lovely lake offers quiet hours to the fisherman or oarsman.

Season:

The best time of year to visit OOTY is between April and June when the 'Queen of Hill Stations' is at her coolest and loveliest. During these months, the races, flower and dog shows add to the charm of OOTY. But there is no 'bad season' here, and a visit at any time of the year is well worth while.

Accommodation:

In addition to hotels, with rates ranging from Rs 7/- to Rs 17.50 per day, OOTACAMUND has two Inspection Bungalows, where suites can be hired for as little as Rs 1.75 or Rs 2.50 per head per day.

How to get there:

Fly by IAC to *Coimbatore*, the nearest airport. From there, a bus takes you to OOTY — 55 miles away. The bus fare is about Rs 4.75 per head.

KODAIKANAL

IS there anyone who has not heard of beautiful KODAI, with its magnificent scenery, its wonderful climate? 7,000 ft. above sea level, KODAIKANAL lies in the Palani Hills — and her world-famous lake, her rushing waterfalls, add to the green, fresh beauty of this lovely hill station.

Sailing, shooting, climbing, hiking, riding — KODAIKANAL offers them all, in addition to a gay social round during the season!

Season:

KODAIKANAL has a temperate climate all the year round but it is from March to May that the hill station is at her very best. Fresh, bracing air and cool nights make KODAI as much a health as a holiday resort.

Accommodation:

There are several good hotels and boarding houses, with rates ranging from Rs 10/- upwards per person per day.

How to get there:

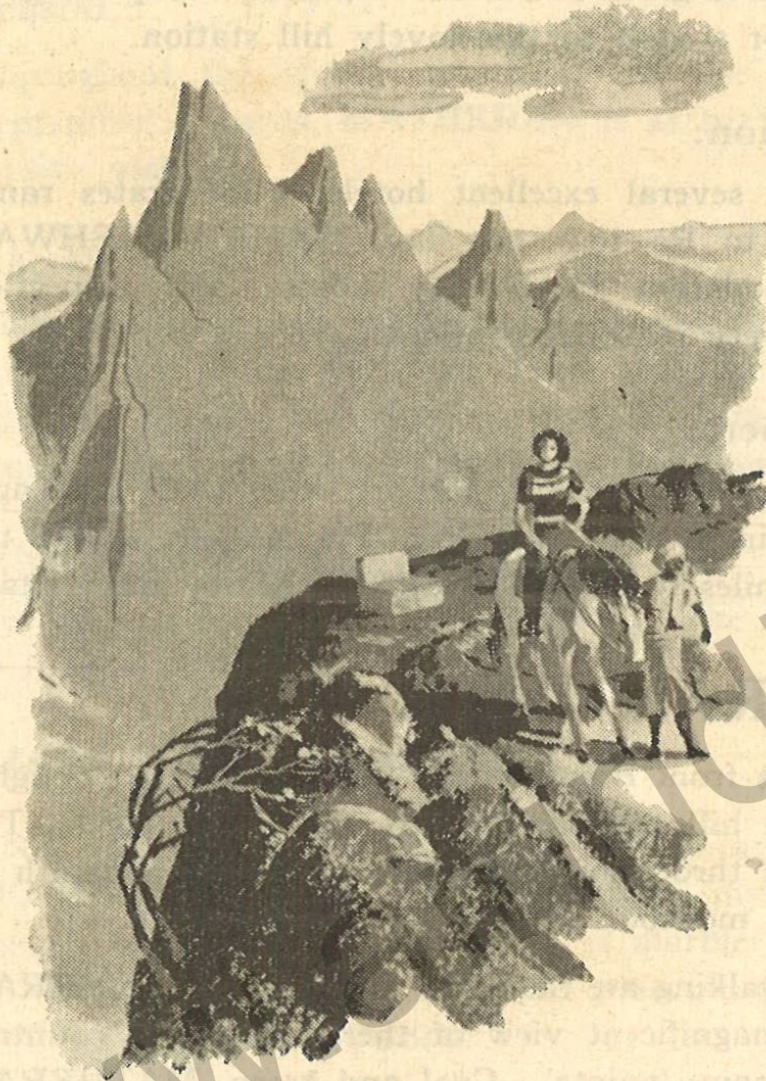
By IAC to *Tiruchirapalli*, the nearest airport. From there, the 77 miles to KODAIKANAL ROAD can be covered by rail; a bus takes you the remaining 50 miles to KODAIKANAL HILL STATION.



Bear Shole Falls, Kodaikanal

Three lovely 'Ms'!

MAHABALESHWAR, Matheran and Mount Abu — three beautiful hill stations, each with its own particular attraction. Bombay Airport serves Mahabaleshwar and Matheran; for Mount Abu, the IAC passenger flies first to Ahmedabad.



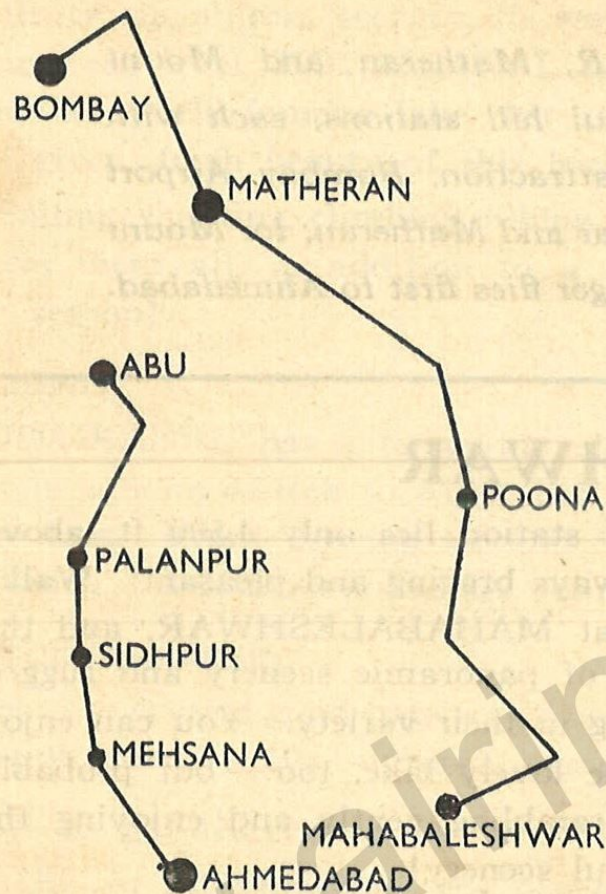
Louisa Point, Matheran

MAHABALESHWAR

THOUGH this lovely hill station lies only 4,500 ft. above sea level, its climate is always bracing and pleasant. Walking is the great pastime at MAHABALESHWAR, and the many 'points' offer views of panoramic scenery and rugged natural beauty, bewildering in their variety. You can enjoy fishing and boating on the lovely lake, too — but probably you will love most just rambling gently and enjoying the wonderful air and beautiful scenery!

Season:

MAHABALESHWAR is at her loveliest best for visitors between November and February, when the climate is coolest



and the whole area green and fresh. April and May are good months, too, for a visit to this lovely hill station.

Accommodation:

In addition to several excellent hotels, whose rates range from Rs 14/- to Rs 16/- per day, MAHABALESHWAR offers accommodation in holiday homes and inspection bungalows at very reasonable prices.

How to get there:

From *Bombay*, the nearest airport, the IAC passenger changes to train or road travel to Poona, and covers the remaining 71 miles to MAHABALESHWAR by bus or taxi.

MATHERAN

ONLY 55 miles from Bombay, lies MATHERAN, a delightful and unique hill station, 2,652 ft. above sea level. The climate is good throughout the year, except for a month or two during the monsoon.

Riding and walking are the main sports, and MATHERAN commands a magnificent view of the surrounding countryside from its many 'points'. Cool and green, MATHERAN appeals to the traveller who seeks quiet and solitude.

Season :

Throughout the winter months, from the end of September onwards, MATHERAN is at her best to receive visitors.

Accommodation :

There are two hotels, whose daily charges are about Rs 15/- per person per day. There are also several boarding houses, with very reasonable charges, and rooms can be booked in the inspection bungalows.

How to get there :

By IAC plane to *Bombay*, and from there by rail or road to MATHERAN.

MOUNT ABU

ONE of the fabulous old cities of ancient India, MOUNT ABU'S history mingles with myth and legend, and nowhere in the world is marble worked so exquisitely as in the thousand-year old temples of this beautiful hill-station.

4,000 ft. up, MOUNT ABU is cool and lush with the greenery of the forest. Picturesque paths lead

to delectable spots on the lake, the hermits' caves and to views of peerless beauty. The area abounds with wild game making the locality a *shikari's* paradise. Fishing and boating on the lake, riding and hiking give you a pleasant holiday.

Season:

With a dry and pleasant summer, and a brisk, exhilarating winter, MOUNT ABU is at its best between April and June and from October to November. There is an excellent club with a golf course, and a cinema.

Accommodation:

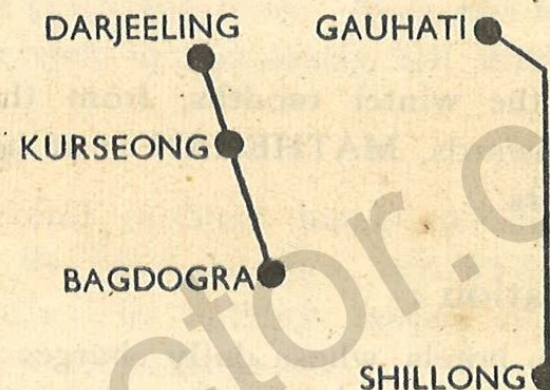
In addition to the Mount Hotel, there are dak and inspection bungalows, rest houses, and several cottages to be hired.

How to get there:

Fly by IAC to *Ahmedabad*, the nearest airport. From there, you can go to Mt. Abu Station by rail, and from there to MOUNT ABU—a distance of 18 miles—by bus or taxi. The bus fare is Rs 3.22 per head.

In the North East

Two of India's finest hill stations, Shillong and Darjeeling, have much to offer the holiday-maker. For Shillong, the IAC passenger flies first to Gauhati; Bagdogra serves famous Darjeeling.



SHILLONG

IT was a foreign visitor who likened the country around SHILLONG to the lowlands of Scotland. And indeed he was right! Assam's capital lies 5,000 ft. above sea level in the midst of rugged and splendid scenery.

You can enjoy riding, swimming, fishing, golfing and trekking in and around SHILLONG. Or take a trip to Cherrapunji, 36 miles away and see what one of the wettest places in the world looks like!

Season:

SHILLONG'S climate is temperate — it seldom gets hotter than 23.5°C (94°F) even in the height of

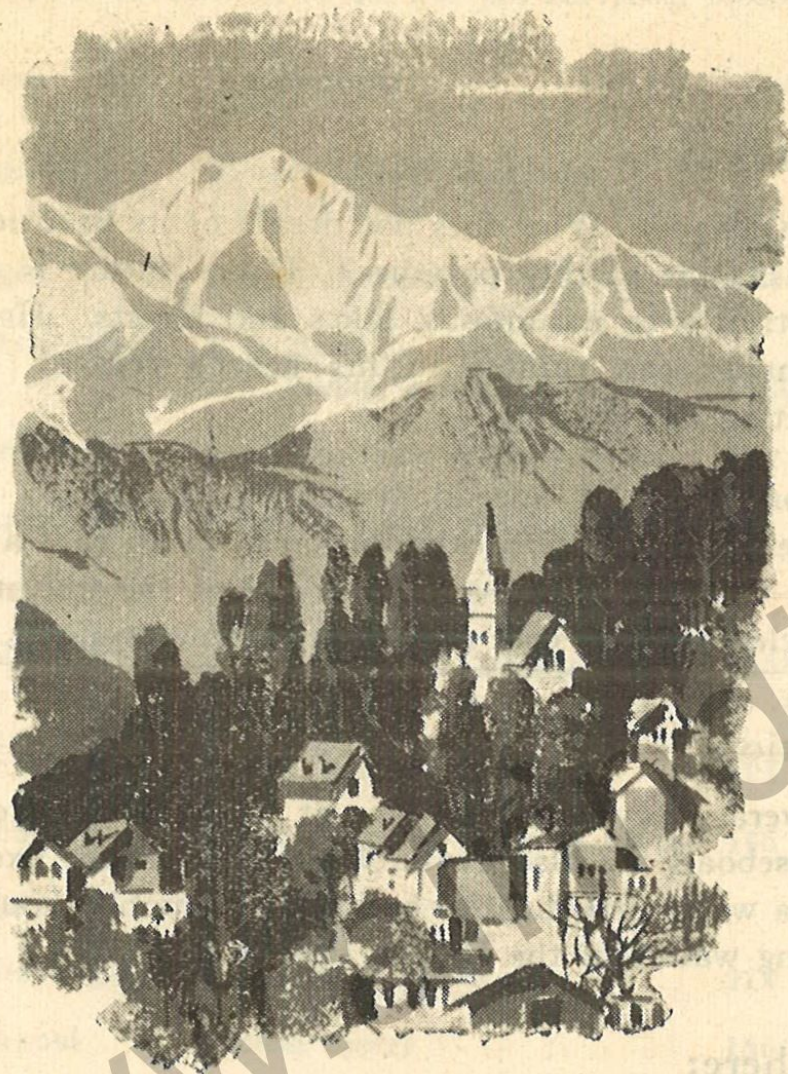
summer, and the nights are cool and refreshing. The season proper is from April to June and from October to November.

Accommodation:

SHILLONG has two excellent hotels, whose rates range from Rs 14/- to Rs 23/- per person per day.

How to get there:

The nearest airport is *Gauhati*. From there, the IAC traveller can cover the 60 miles to SHILLONG by bus, mail van or taxi.



Kanchanjunga from Darjeeling

DARJEELING

NESTLING at the foot of the mighty Himalayas, lies one of India's finest hill resorts — **DARJEELING**. From this lovely place, 7,000 ft. above sea level, the visitor can feast his eyes on the spectacle of the highest mountain peaks in the world.

Naturally, it is walking and rambling that most people enjoy in **DARJEELING** — but there are also, a race course, the beautiful Botanical Gardens and the famous Ghoom Monastery. And for sportsmen there is a choice of riding or fishing.

Season:

DARJEELING'S climate is bracing; the thermometer hardly ever climbs above 22°C (72°F). The best times to visit the hill station are from mid-March to mid-June, and from mid-September to November.

Accommodation:

Many good hotels and comfortable boarding houses offer the visitor excellent accommodation at rates ranging from Rs 10/- to Rs 45/- per day.

How to get there:

By IAC plane to the nearest airport *Bagdogra*; from there by bus or taxi to **DARJEELING** — 49 miles away.



Dal Lake, Srinagar

SRINAGAR

FABULOUS Kashmir! Who does not dream of its beauties, and long to visit this earthly paradise? Here, Nature is at her most beautiful with mountains, lakes and forests. Here the holiday maker can ramble to his heart's content, or indulge in boating and fishing.

Every season brings a special beauty to Kashmir; in winter, skiers enjoy the superb exhilaration of clean cool air. In spring, the valley is green and fresh. And the autumn months bring clear, bright, cool days — refreshing evenings.

Accommodation:

There are several very good hotels, at reasonable rates. Furnished houseboats are also available at Government fixed rates, and it's a wonderful thrill to holiday in a mobile house on the sparkling waters of the Dal or Jhelum.

How to get there:

Direct by IAC plane to *Srinagar* airport.

For full details of all our air services, please contact your nearest Indian Airlines Corporation office :

<i>City</i>	<i>Address</i>	<i>Telephone</i>	<i>City</i>	<i>Address</i>	<i>Telephone</i>
Agartala	Khosh Mahal Building, Central Road	28	Bhuj	Holi Chakla, near City Palace	34
Agra	Imperial Hotel	434	Bombay	Army & Navy Building, Mahatma Gandhi Road, Fort	25-1540, 25-1544, (6 lines)
Ahmedabad	Old Bombay Garage, Dr. Tankaria Road	3830	Calcutta	4 Chittaranjan Avenue	23-5141 (6 lines)
Amritsar	Brij Bhawan, Gandhi Gate	607	Chittagong	319 Quid-e-Azam Jinnah Road	5596
Aurangabad	Krishna Vilas, Station Road	64	Cochin	Luiz Hall Broadway, Ernakulam EKM	65
Bagdogra	Hillcart Road, Siliguri	32	Coimbatore	India House, Trichy Road	343
Bangalore	12A Mahatma Gandhi Road, Bangalore Cantt.	4138, 4209 & 4683	Colombo	27, Main Street, Gaffoor Building, Fort	3136 & 4838
Belgaum	Hotel Green Camp	185	Dacca	Noor Chambers 9-Pakistan Avenue, Ramna	3823
Benaras	Clark's Hotel, Benaras Cantt.	146	Darjeeling	Laden La Road	355
Bhaiwara	P.O. Nautauwa, Dist. Gorakhpur		Delhi	Malhotra Building, Janpath	46069, 46132 40071 (4 lines)
Bhavnagar	Diwanpura Road	214	Dibrugarh (Mohanbari)	Hansaria House. P. O. Rehbari	114
Bhopal	Delite Hotel	156	Digboi	M/s. Biswanath Singh & Co.	262
Bhubaneswar	Unit No. 6, Type 6, Quarter 6, New Capital	68			

<i>City</i>	<i>Address</i>	<i>Telephone</i>	<i>City</i>	<i>Address</i>	<i>Telephone</i>
Gauhati	Mookerjee Lodge, Pan Bazar	28	Muzaffarpur	Sariyaganj, Ghirneepokher Road	198
Hyderabad	Basheer Bagh Road	4979	Nagpur	Kamptee Road	3361
Imphal	Maxwell Bazar	28	Pathankot	Opp. Railway Station	140
Jaipur	2-B, New Colony	117	Patna	Exhibition Road	2554
Jammu	Standard Hotel, Residency Rd.	435	Porbandar	New Sudama Chowk, Bus Stand	18
Jamnagar	Indra Mahal, Bhid-Bhanjan Rd.	85	Rajkot	Hir Mahal, Coronation Gardens	249
Jorhat	Gar-Ali	11	Rangoon	Flotilla House, 50, Phyare Street, South	410
Kabul	Deh Afghan Shah Md. Khanwad Road	1339	Shillong	A. C. Sen & Co., Peak Hotel,	145
Karachi	Karachi House, McLeod Road	30996-97-98	Silchar	Club Road	72
Kathmandu	6/42 Judha Sadak	198	Srinagar	Residency Road	338
Keshod	Near Railway Station	Extn: 6	Tezpur	Bhabani Kutir, Opp. Academy School	83
Lahore	11, Dayal Singh Mansions, The Mall	5167	Tinsukia	Asiatic Trading Co.	29
Lilabari	North Lakhimpur (Assam)		Tiruchirapalli	Ashok Bhawan, Junction Road	116
Lucknow	Carlton Hotel	4030	Trivandrum	Trivandrum Air Centre, Main Road	2507
Madras	5 & 6 Mount Road	86433 (4 lines)	Visakhapatnam	20/133 Thompson Road	673
Mangalore	Sir Rang Bhavan, K. S. Rao Road	269			