

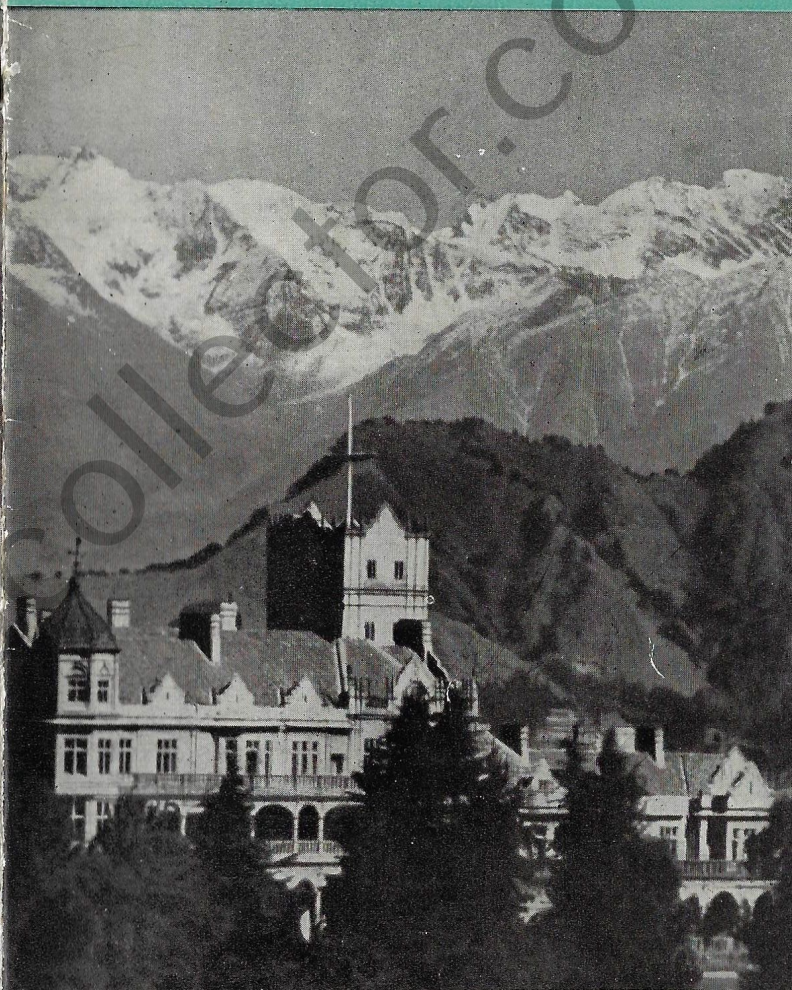
SIMLA



In winter

INDIA

SIMLA



*With the Compliments
of*

AIR-INDIA  *International*

Vivas

Simla

Among the holiday resorts in India, there is hardly any which is better known or more frequented than Simla — the 'Mountain City' of India. Picturesquely situated on several small spurs of the lower Himalayas at a height of 7,262 feet above the sea level, this old summer capital of the Government of India and now the capital of Himachal Pradesh looks like a pear surrounded in the north and the east by a network of mountain chains.

Simla is easily accessible from the plains. Travelling overnight from Delhi you reach Kalka early in the morning to catch the first glimpse of the mighty mountains. From Kalka to Simla you can either travel by the little train which creeps slowly upward, round and round the hills for about 60 miles or go by car or bus reaching Simla within three hours. The journey by rail-motor-car is one of the most delightful experiences and takes just about four and a half hours. If you are one of those who feel giddy on a journey to the hills, you would do well to travel by rail-motor-car.

On either side of the Kalka-Simla road, a number of small hill stations are situated at convenient heights wooded by thick pine and cedar

forests. The most well known amongst these are Kasauli, Sabathu, Dagshai and Solan. Whereas Dagshai and Sabathu are at present small cantonments, Kasauli is a pretty holiday resort, situated 23 miles by road from Kalka at a height of 6,322 feet above the sea level. With its picturesque scenery, pretty houses, a number of schools, a comfortable club and a hotel, Kasauli is certainly worth a visit.



Railway station — Dharampur

Simla is probably the largest hill resort in India. It has magnificent public buildings, several first class hotels and restaurants with excellent cuisine, clubs and adequate shopping centres where you

can buy almost anything and many cinemas which offer the tourist a rich variety of English, American and Indian films. It is one of the few cities in India which can boast of a good theatre with excellent acoustics. During the season a large number of plays in English and Hindi are staged by amateur dramatic clubs.

A large number of ancient temples with exquisite wood carvings are scattered all over Himachal Pradesh.

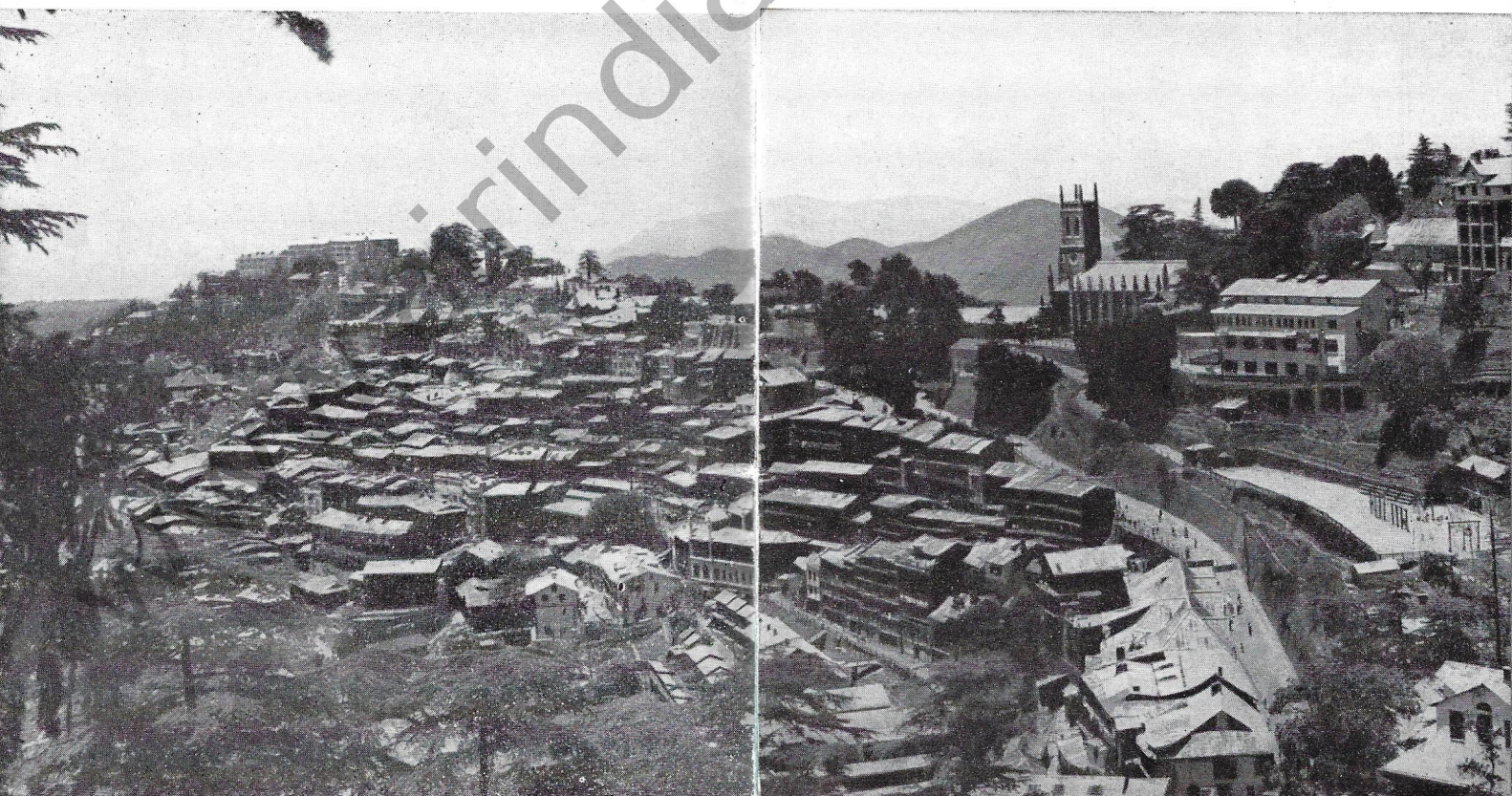
All round the town are excellent walks and a climb up to the summit of Jakku which literally dominates Simla. To view the glorious spectacle of the sun rising over the eternal snows is simply enchanting. On the top of the mountain is the old temple guarded by an army of monkeys fed by the visitors. Below you, lie Simla's dwellings spread over many hills and dales.

About two miles below the Ridge, lies Annandale, a pretty plateau in an extensive valley with a fairly level race course encircling it. Army tattoo, hockey, cricket etc. provide a lot of fun and sport for Simla's numerous visitors during the summer months.

Just below the Annandale is the Glen — a long picturesquely wooded ravine with delightful grassy slopes and a rivulet flowing through. During the summer months Glen is a favourite spot for picnics.

Simla offers varied opportunities for sports. Riding round Jakku, tennis at the Club, cricket and soccer at Annandale and golf at Naldera are only some of the attractions. In winter with snow one can do skating, sledging, ice hockey and skiing. Recently, a Himachal Winter Sports Club has been started and a skiing run has been laid near Chini Bungalow about 10 miles from Simla. The

A general view of Simla



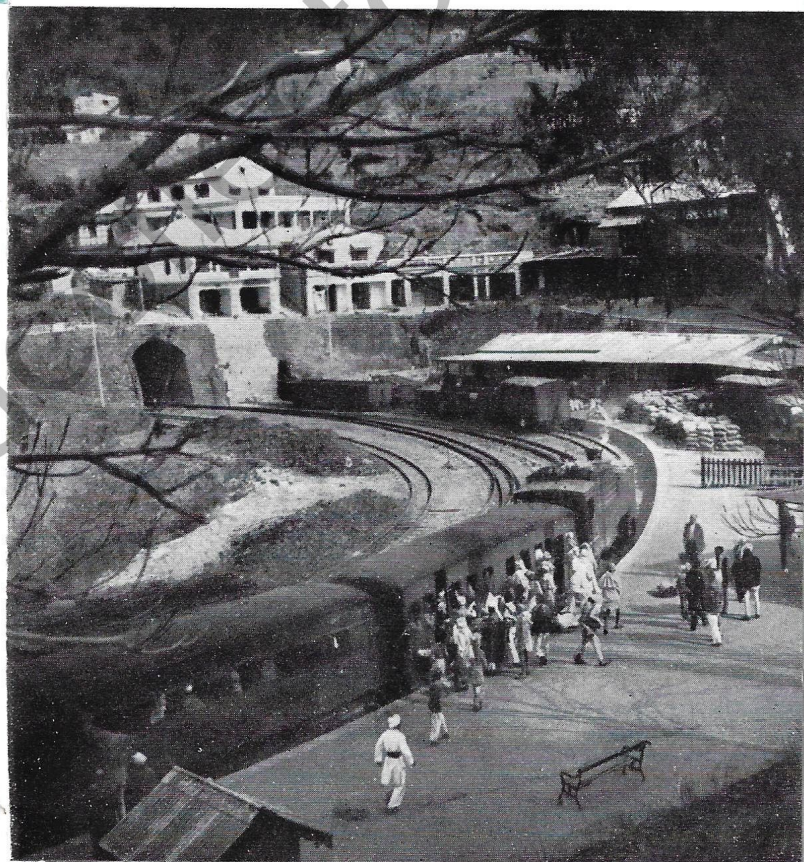
Simla

Among the holiday resorts in India, there is hardly any which is better known or more frequented than Simla—the 'Mountain City' of India. Picturesquely situated on several small spurs of the lower Himalayas at a height of 7,262 feet above the sea level, this old summer capital of the Government of India and now the capital of Himachal Pradesh looks like a pear surrounded in the north and the east by a network of mountain chains.

Simla is easily accessible from the plains. Travelling overnight from Delhi you reach Kalka early in the morning to catch the first glimpse of the mighty mountains. From Kalka to Simla you can either travel by the little train which creeps slowly upward, round and round the hills for about 60 miles or go by car or bus reaching Simla within three hours. The journey by rail-motor-car is one of the most delightful experiences and takes just about four and a half hours. If you are one of those who feel giddy on a journey to the hills, you would do well to travel by rail-motor-car.

On either side of the Kalka-Simla road, a number of small hill stations are situated at convenient heights wooded by thick pine and cedar

forests. The most well known amongst these are Kasauli, Sabathu, Dagshai and Solan. Whereas Dagshai and Sabathu are at present small cantonments, Kasauli is a pretty holiday resort, situated 23 miles by road from Kalka at a height of 6,322 feet above the sea level. With its picturesque scenery, pretty houses, a number of schools, a comfortable club and a hotel, Kasauli is certainly worth a visit.



Railway station — Dharampur

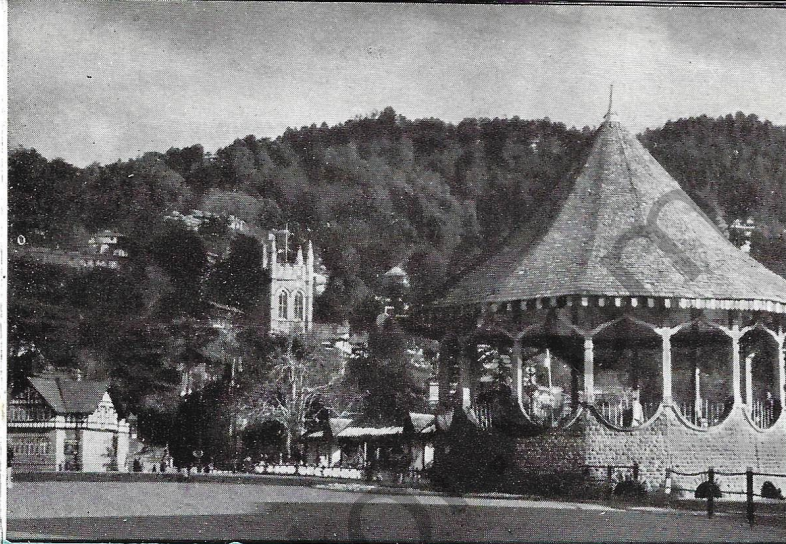
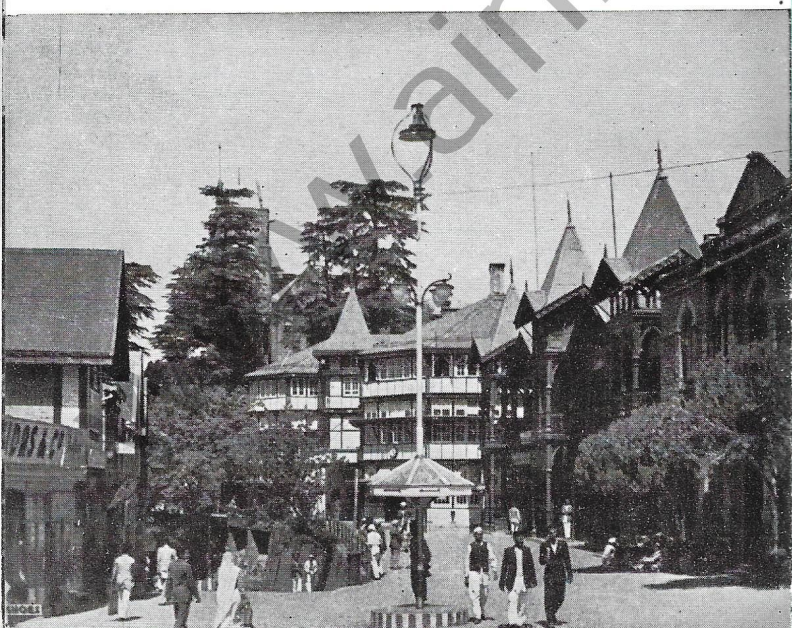
Simla is probably the largest hill resort in India. It has magnificent public buildings, several first class hotels and restaurants with excellent cuisine, clubs and adequate shopping centres where you

winter sports make Simla an ideal holiday resort during the winter months.

For the hikers, Simla is a paradise. Only six miles from the Ridge lies the beautiful suburb of Mashobra — an ideal week-end resort. During May and June, the thick pine and oak forests of Mashobra afford cool and refreshing shelter to numerous picnickers. In addition to a number of cottages in Mashobra, there is a rest house at Craignano. Eight miles beyond Mashobra is Naldera with its picturesque 9 hole golf course, surrounded by deodar forests.

Naldera has a comfortable rest house on the edge of the forest where residential furnished accommodation is available. With a little more time you could easily descend to the hot sulphur springs or 'Tattapani' on the banks of the Sutlej which has a small Forest rest house. On the way one may visit the Chaba reservoir from where Simla gets its electricity. Boating on a moonlit night in the placid waters of Chaba leaves an indelible impression.

Scandal Point



The Bandstand — Ridge

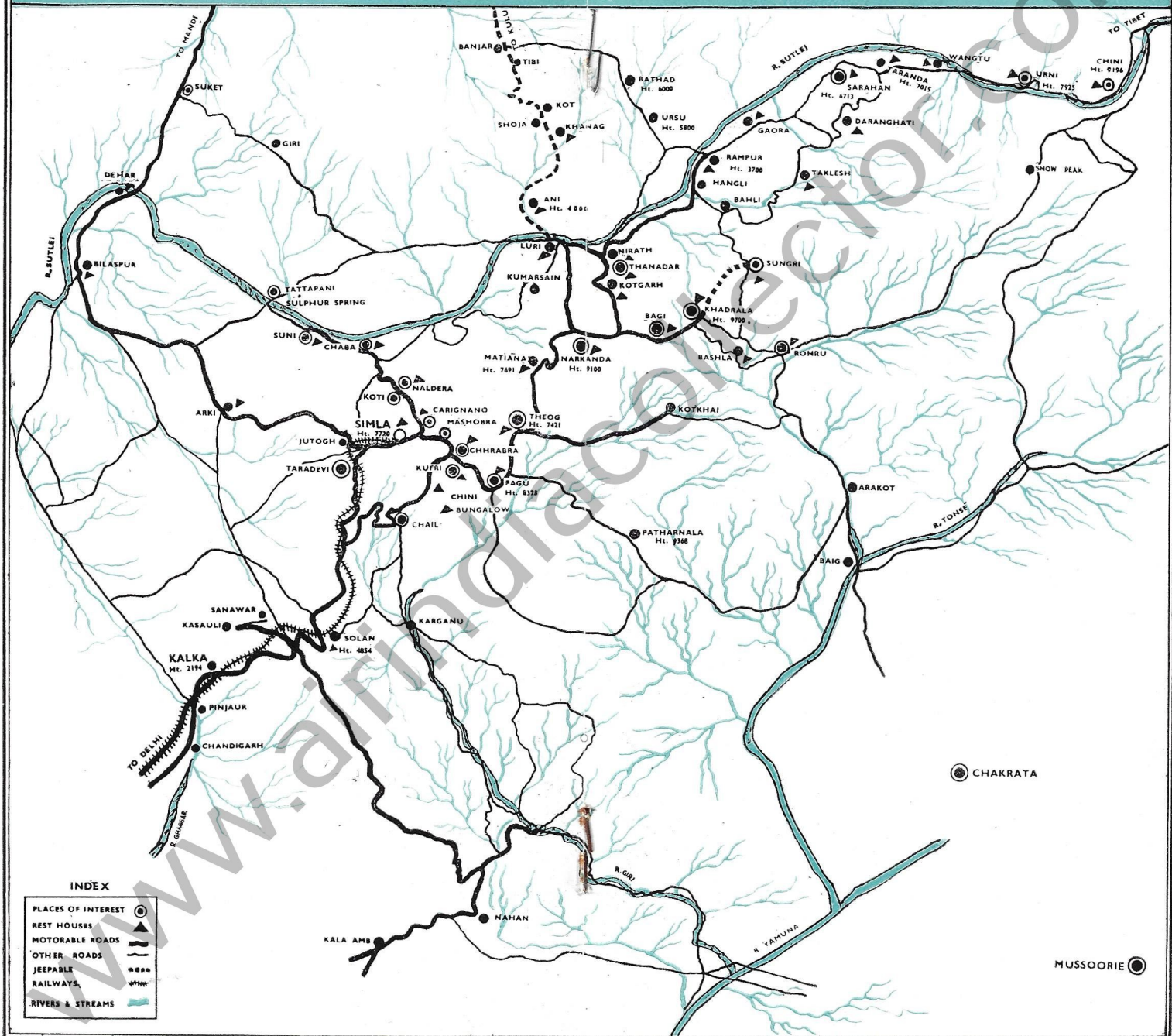
In the valley below Mashobra, is a lovely little natural plateau surrounded by lofty mountains in the middle of which flows a small stream of clear cold water. Here is held an annual fair in the middle of May when the hillfolk from the neighbouring villages gather and give themselves up to merriment and dancing. Their gala dresses, silver ornaments and almond-shaped eyes sparkling with fun and merriment form many a glowing scene in the Sipi fair and also in the Narkanda fair and Lavi fair at Rampur.

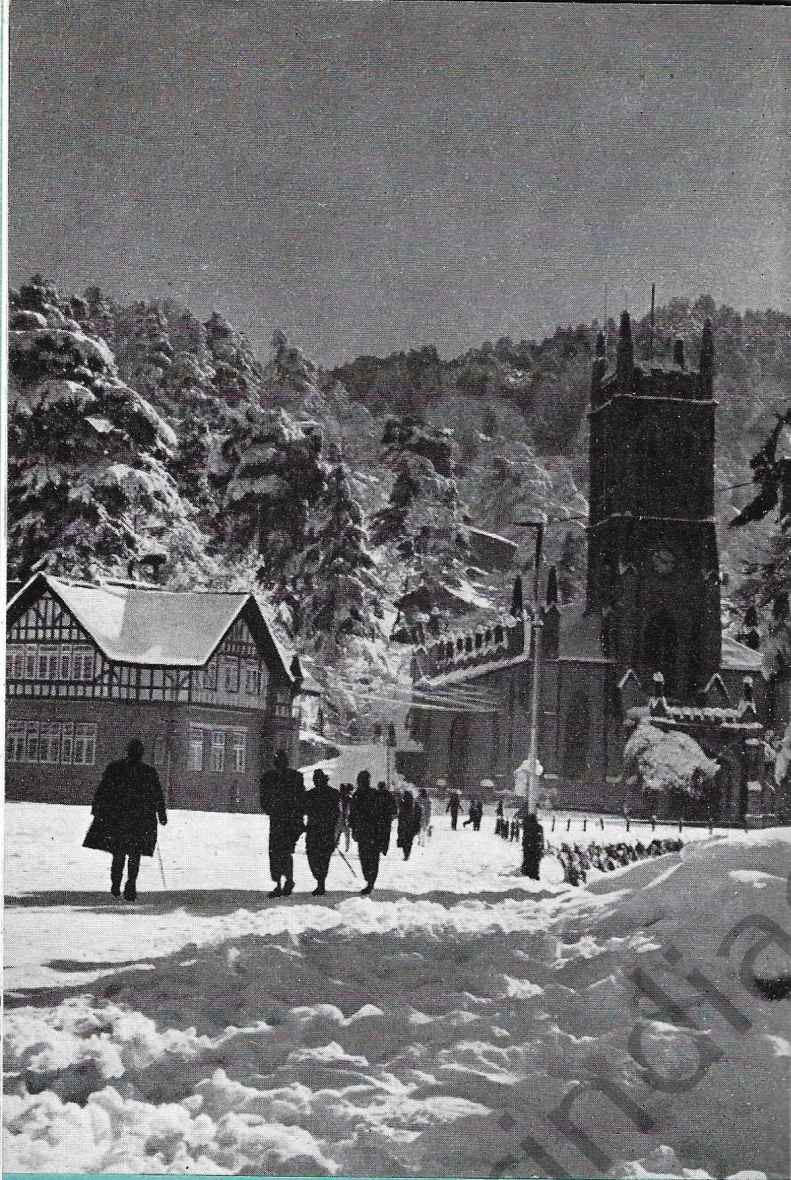
Along the Hindustan-Tibet Road for a distance of 85 miles upto Rampur (Bushair) there are well equipped rest houses which can be reserved by the tourist. Kufri and Chini Bungalow along this route and about 10 miles from Simla are two very popular picnic spots. Besides the regular bus-service, jeeps, station-wagons etc. to all these places of interest can be arranged through the Himachal Pradesh Government Transport.

Among other picnic spots may be mentioned Tara Devi (6,053 ft.), the head-quarters of the Boy Scouts Association and the Chadwick Falls near the Summer Hill and the Prospect Hill. For

SIMLA & SUBURBS

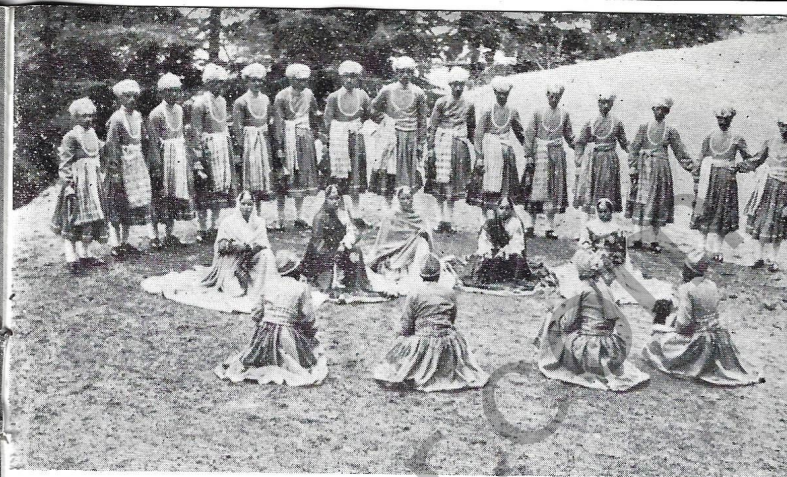
SCALE 4 3 2 1 0 1 2 3 4 5 MILES





The century old Catholic Church of Simla

Right through Simla runs the Lajpat Rai Marg. The centre of the city is occupied by an expanse of open space called the Ridge on which stands the Christ Church. A life-size statue of Mahatma Gandhi has just been installed on the Ridge. The famous rendezvous at Simla is known by the popular (perhaps very apt) name of Scandal Point where the Ridge tapers off and meets Lajpat Rai Marg. All the important shops, tea and coffee



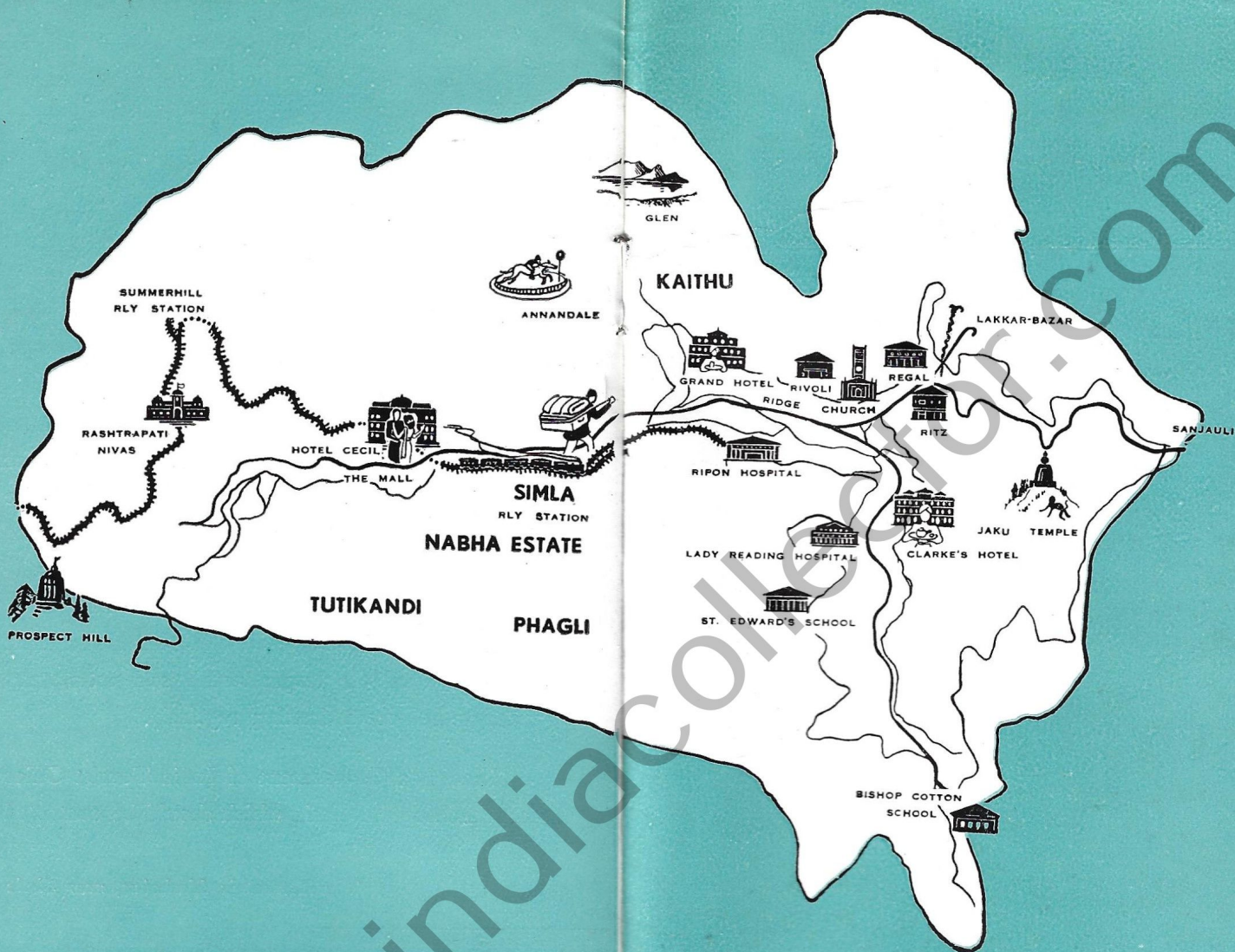
Folk dancers from Simla Hills

houses, the Gaiety Theatre and cinema houses are located within a radius of half a mile of the Scandal Point and the Ridge (now known as Lajpat Rai Square). The statue of the great political leader of the Punjab, Lala Lajpat Rai stands in the middle of the Square. Simla has also a night life, some of the larger hotels and restaurants arrange ball-room dancing regularly.

There is a Government of India Tourist Office on the Ridge at Simla which should be contacted

The Retreat in Mashobra, near Simla





The hill belles

by the tourists for any further information. Visitors intending to proceed further in Himachal Pradesh should find it useful to make their transport and other arrangements regarding Winter Sports through the Director of Public Relations and Tourism, Himachal Pradesh, Kennedy Cottage, Simla.

Produced by the Director of Advertising and Visual Publicity, Ministry of I. & B., Govt. of India for the Ministry of Transport and Communications. Printed by M/s. Wagle Process Studio and Press (Private) Ltd., Lakshmi Bldg., Sir P. M. Road, Bombay 1.

Published by and for the Govt. of India
Printed in India (Not to be sold).