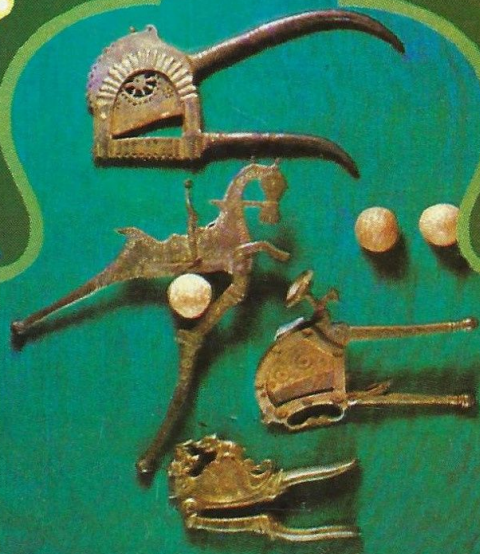


एअर इंडिया
AIR-INDIA





पुलाव
शाक कोफ़ता कढ़ी
शाक मसाला

दही • पूरी • पापड़ • अचार

सलाद मिश्रित — सलाद ड्रैसिंग

नाशपाती पुडिंग

चीज़

काफ़ी • चाय



RICE PILLAU
VEGETABLE KOFTA CURRY
SPICED VEGETABLE



YOGHURT • POORIES • PAPAD • PICKLE



MIXED SALAD — DRESSING



PEAR WITH CHOCOLATE SAUCE AND NUTS



CHEESE



COFFEE • TEA

Clockwise

RAMA DURBAR.

Fragment of a Ratha (Wooden Charlot).
South India, 19th Century A.D.

DECORATIVE BETEL-NUT CUTTERS.

Brass/steel, from different Indian regions,
19th Century A.D.

NANDI WITH COBRA.

Brass, Karnataka, late 18th Century A.D.

**DECORATIVE CASKET WITH
FLOWERING MEANDER.**

Tinned brass, Mughal/Deccani,
Hyderabad, 19th Century A.D.

from the Air-India Collection.

T8-1-83-R