

THE KANGAROO ROUTE



TO BRITAIN



QANTAS • B.O.A.C

YOU CAN BOOK THROUGH



EFFECTIVE 1st FEBRUARY, 1952
Until further notice

THE KANGAROO ROUTE



TO AUSTRALIA



B.O.A.C • QANTAS

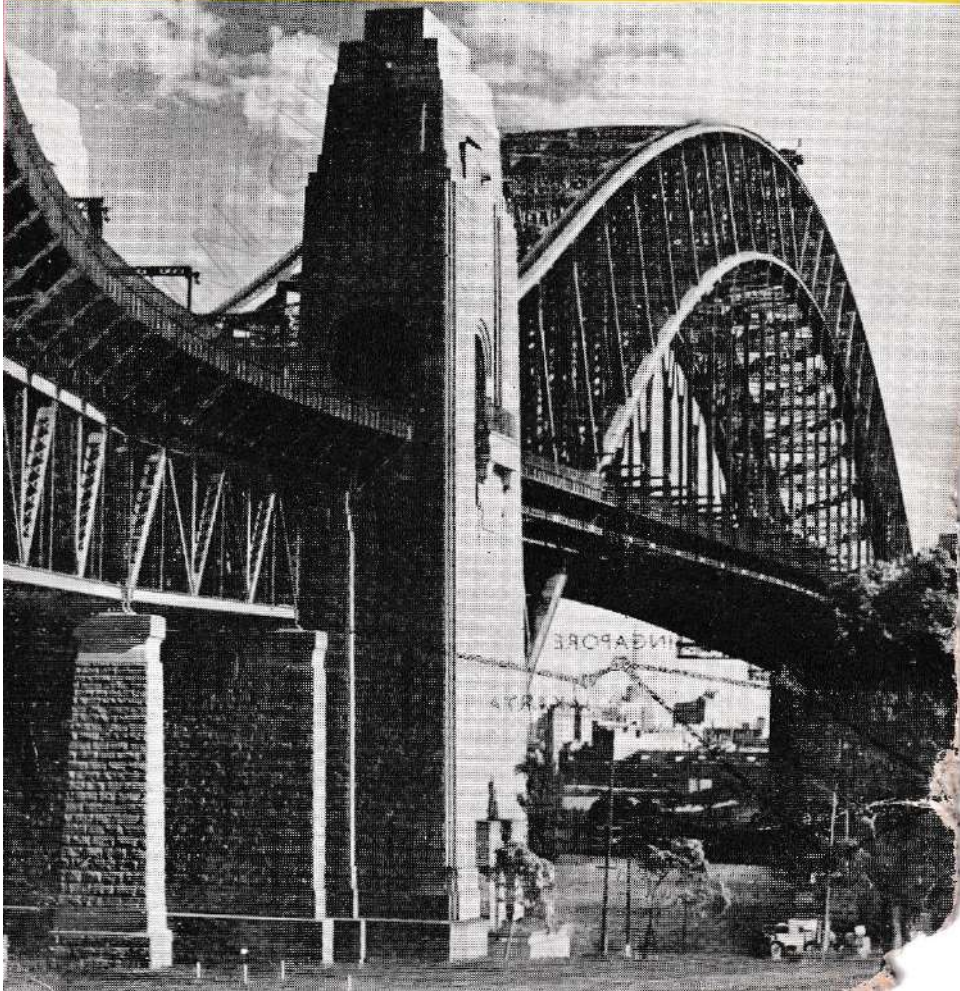
BRITISH OVERSEAS AIRWAYS CORPORATION
IN ASSOCIATION WITH
QANTAS EMPIRE AIRWAYS LIMITED



LONDON — *Big Ben and Parliament Square*



SYDNEY — *The famous Harbour Bridge*



GENERAL INFORMATION

RESERVATIONS To ensure passage on the required date, reservations should be made and fare or deposit paid well in advance. At destination or transfer points, you are advised to confirm return or onward reservations. Please notify us immediately if you have to cancel or defer your reservation, and return your ticket. Refund of fare cannot be guaranteed in case of cancellation at short notice.

PASSPORTS, PERMITS AND VISAS All B.O.A.C. and Travel Agents' Offices will give assistance in obtaining necessary travel documents for your journey. Some Consulates, however, insist on personal attendance. Remember—don't pack your passport!

YOUR TICKET AND CONDITIONS OF CONTRACT Your ticket is issued subject to these Regulations and to our General Conditions of Carriage of Passengers and Baggage. These are exhibited in full at all B.O.A.C. offices and an extract will be found in the ticket.

RETURN TICKETS Return tickets, normally valid a year, cost about 10% less than two single fares. Special return tickets allowing about 10% rebate cover—on certain routes—circle trips, round-the-world tours and return from a point other than your outward destination. Excursion fares and special fares for schoolchildren are available in certain circumstances. Combined services at special fares can be obtained where B.O.A.C. has interchange arrangements with other air carriers.

CHILDREN AND INFANTS An infant under two, not occupying a seat with an adult, is normally charged 10% of the fare. Additional infants with the same adult, infants under two occupying seats and children between two and twelve are charged half-fare. Age is taken as at the beginning of the outward trip.

WHAT YOUR FARE INCLUDES Besides free baggage allowance, your fare includes nightstop accommodation and all meals in flight and on the ground from the departure of your aircraft until arrival at the airport destination shown on your ticket. Transport between town and airport (except at Basra) is also included. At points of transfer to direct connecting services, hotel accommodation and meals are provided when your journey is entirely on B.O.A.C. services, or when it involves other carriers with whom we have an arrangement for a special through fare. For all other journeys involving carriers with whom we have no such arrangement, hotel bills, etc., incurred at connecting points will be your responsibility.

TAXES Any ticket, transportation or other taxes imposed by Governmental Authority are additional to the fare. Please ask for advice when booking.

STOPOVERS You may break your journey at one or more places en route (except where precluded by Government Order) provided notice is given at time of booking. Hotel expenses at stopovers will be your responsibility.

YOUR BAGGAGE The usual free baggage allowance is 30 kilos; but on return journeys between points in Europe and Australia/New Zealand, also for round-the-world tours, it is 40 kilos. On short journeys the free allowance is 20 kilos. Children at half-fare get the adult allowance. Infants paying 10% fare get no free allowance, but a portable cradle is allowed as part of the baby's own weight. Personal articles—e.g., lady's handbag, overcoat, binoculars—can be carried free; but brief or attaché cases and parcels are NOT included in this category and will be weighed as part of your free allowance. You pay 1% of the normal single fare per kg. for the first 10 kgs. of excess baggage; for additional excess baggage the rates are halved. Please enquire in advance regarding facilities for passengers in a party to group baggage; also for sending unaccompanied baggage in advance at cheaper rates. All baggage is weighed before departure, and marked "Not Required on Voyage" and "Required at Nightstops"; the former will be inaccessible during flight and the latter available as indicated. Articles needed during flight should be packed in a bag weighing under 5 kilos, which will be weighed as part of your free allowance, but left in your custody. Animals, birds or other livestock cannot be carried.

HOTEL ACCOMMODATION ON ARRIVAL Accommodation is limited at most destinations so you should always see that your rooms have been booked for you in advance.

PUNCTUALITY Although we do all we can to ensure punctuality, B.O.A.C. cannot accept responsibility for delay or suspension of a service, nor guarantee connections with other air services or surface carriers.

CONSULT YOUR TRAVEL AGENT OR B.O.A.C. It is only possible here to give an outline of points for your guidance. For details, please refer to our booklet "Before You Take Off." Any Travel Agent or B.O.A.C. office will gladly supply all information about schedules, travel formalities, etc., and give every assistance.

THE INFORMATION CONTAINED IN THIS TIMETABLE IS SUBJECT TO ALTERATION WITHOUT NOTICE.

51/34/26M/McC.

Printed in Great Britain

PASSENGER

EASTBOUND

EM 506 (a)		EM 502		BA 704 (b)		CONSTELLATION SPEEDBIRD
Alt.Su.	06.30	We.Sa.	06.30	Tu.Fr.Alt.Su.	06.30	dep. AIRWAYS TERM
	08.00		08.00		08.00	dep. LONDON AIRPO
	13.00		13.00		13.00	arr. ROME
	14.30		14.30		14.45	dep. ROME
	21.00		21.00		—	arr. CAIRO
	22.00		22.00		—	dep. CAIRO
	—		—	②	21.00	arr. BEIRUT
	—		—	We.Sa.Alt.Mo.	07.45	dep. BEIRUT
Alt.Mo.	02.30	Th.Su.	02.30		—	arr. BASRA
	13.00		13.00		—	dep. BASRA
	19.00		19.00		18.00	arr. KARACHI
	20.30		20.30		20.30	dep. KARACHI
	—	Fr.Mo.	02.30	Th.Su.Alt.Tu.	02.30	arr. CALCUTTA
	—		03.45		03.45	dep. CALCUTTA
	23.55		—		—	arr. BOMBAY
Alt.Tu.	01.10		—		—	dep. BOMBAY
	05.15		—		—	arr. COLOMBO
	07.15		—		—	dep. COLOMBO
②	16.35	②	13.00		13.00	arr. SINGAPORE
Alt.We.	07.00	Sa.Tu.	07.00	Fr.Mo.Alt.We.	07.00	dep. SINGAPORE
	09.30		09.30		09.30	arr. JAKARTA
	10.30		10.30		10.30	dep. JAKARTA
	19.00		19.00		19.00	arr. DARWIN
	22.30		22.30		22.30	dep. DARWIN
Alt.Th.	07.00	Su.We.	07.00	Sa.Tu.Alt.Th.	07.00	arr. SYDNEY

Notes :

All times quoted are

- (a) Alt. Su. services depart London Feb. 3, 17 and Mar. 2, 16, 30.
- (b) Alt. Su. services depart London Feb. 10, 24 and Mar. 9, 23.
- (c) Alt. Mo. services depart Sydney Feb. 4, 18 and Mar. 3, 17, 31.

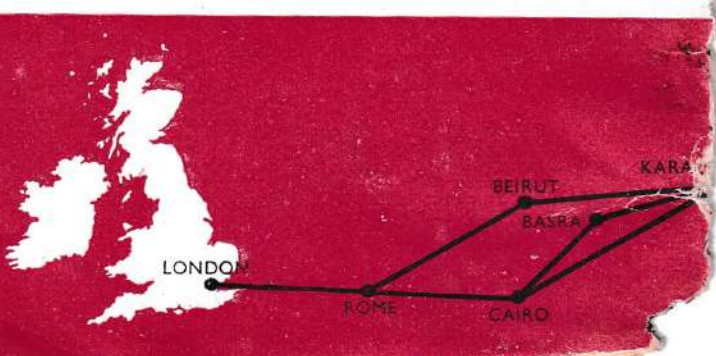
On services EM 501/502, EM 505/506 traffic may not be carried London/Rome, Ro Normal stopover facilities are now in force at Rome for passengers travelling to route and passengers arriving for a stopover on a Qantas service may be carried vice versa. No traffic may be carried Karachi/Calcutta or Karachi/Bombay and vic

PASSENGER

To SYDNEY

From		Single		Return		
		£	s	£	s	
LONDON		£280	0 0	£504	0 0	Sterling
ROME		£264	0 0	£475	4 0	Sterling
CAIRO		£E235.000		£E423.000		Egyptian Pounds
BEIRUT		£234	0 0	£421	4 0	Sterling
KARACHI		1641		2954		Pakistan Rupees
CALCUTTA		2014		3626		Indian Rupees
BOMBAY		2214		3986		Indian Rupees
COLOMBO		1974		3554		Ceylon Rupees
SINGAPORE		823.00		1482.00		Straits Dollars
JAKARTA		£87	0 0	£156	12 0	Sterling
DARWIN		£50	0 0	£90	0 0	Australian Pounds

On the Kangaroo Route passengers fly right through between London and Sydney in the same aircraft, but can break the journey without extra charge at any stopping place; for example, at Rome, where there are frequent services to and from



SCHEDULES

WESTBOUND

ION		BA 705	EM 501	EM 505
		(c)	(d)	(e)
NAL RT	arr.	18.15	20.15	20.15
	arr.	17.00	19.00	19.00
	dep.	13.45	15.45	15.45
	arr.	12.00	14.00	14.00
	dep.	—	09.15	09.15
	arr.	—	08.00	08.00
	dep.	07.00	—	—
	arr.	15.30	—	—
	dep.	—	—	—
	arr.	—	—	—
	dep.	08.30	00.30	00.30
	arr.	05.30	21.00	Alt.Mo.
	dep.	00.30	16.00	21.00
	arr.	23.15	14.45	—
	dep.	—	—	19.25
	arr.	—	—	18.10
	dep.	—	—	14.05
	arr.	—	—	12.35
	dep.	18.00	09.30	07.45
	arr.	15.30	15.30	Alt.Su.
	dep.	13.00	13.00	15.30
	arr.	12.00	12.00	13.00
	dep.	07.15	07.15	12.00
	arr.	04.45	04.45	07.15
	dep.	21.30	21.30	04.45

Local Times

Ⓝ Nightstop

(d) Alt. Fr. services depart Sydney Feb. 8, 22 and Mar. 7, 21.

Alt. Mo. services depart Sydney Feb. 11, 25 and Mar. 10, 24.

(e) Alt. Fr. services depart Sydney Feb. 1, 15, 29 and Mar. 14, 28.

me/Cairo and vice versa.
or from any point on the
by a B.O.A.C. service and
e versa on any service.

Service BA 704/705 is operated by B.O.A.C.
in association with Qantas. Services
EM 501/502, EM 505/506 are operated by
Qantas in association with B.O.A.C.

IR FARES

To LONDON

		Single	Return	
From	SYDNEY	A£350 0 0	A£630 0 0	Australian Pounds
"	DARWIN	A£312 10 0	A£562 10 0	Australian Pounds
"	JAKARTA	£200 0 0	£360 0 0	Sterling
"	SINGAPORE	1646.00	2963.00	Straits Dollars
"	COLOMBO	2307	4153	Ceylon Rupees
"	BOMBAY	2067	3721	Indian Rupees
"	CALCUTTA	2294	4130	Indian Rupees
"	KARACHI	1382	2488	Pakistan Rupees
"	BEIRUT	£81 0 0	£145 16 0	Sterling
"	CAIRO	£E79.000	£E142.200	Egyptian Pounds
"	ROME	£32 10 0	£58 10 0	Sterling

other European cities. From Sydney there are frequent connections to Auckland and Wellington in New Zealand. Through reservations to any off-route point can be made at the time of booking.

