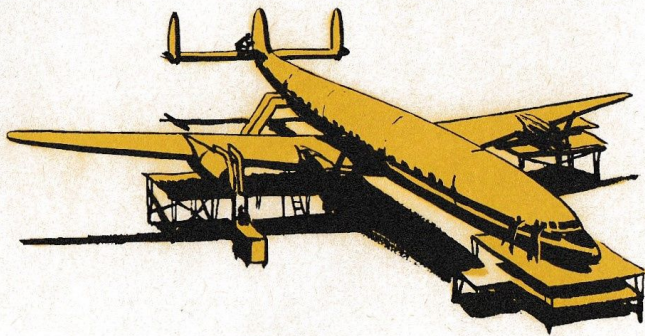


...and its passengers!





*Beginning a memorable day...long in pleasure
...short in time*



FLIGHT TIME MINUS TWO HOURS

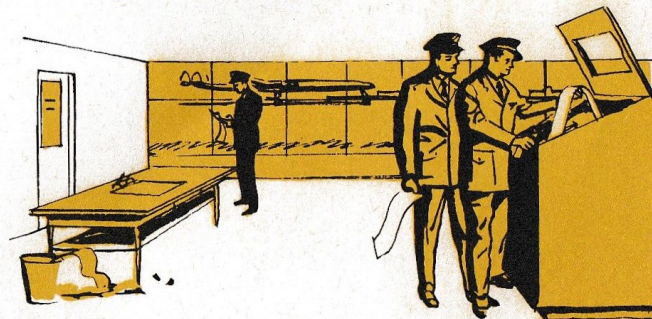
The airline's day begins long before the hour of your flight... night long cleaning, servicing and inspection of the Super Constellation which will carry you to your destination, is completed. While you are still at home or in your hotel, expert chefs are busy preparing the delicious meals which will be served in flight.



Before you arrive at the airport the third member of the flight crew—the flight engineer—conducts an intensive visual inspection of the entire aircraft. During flight, he will be responsible for monitoring 60% of the flight instruments, permitting the pilot and co-pilot to concentrate on making your trip smooth and enjoyable.



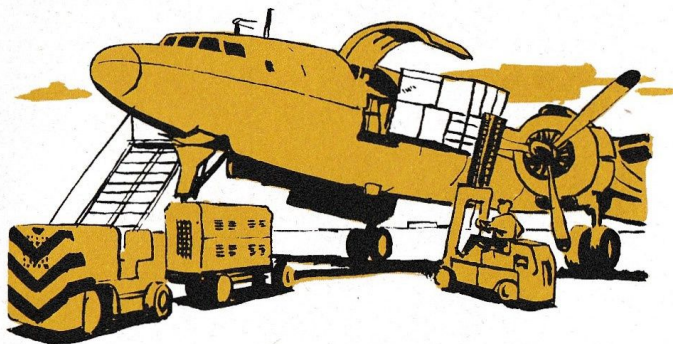
When the Super Constellation is towed to the loading ramp, up to 7,750 gallons of fuel will be taken aboard depending on the length of your trip. At the same time, ground power and air conditioning units will be connected to the aircraft to make the spacious passenger compartments cheerful and inviting for your arrival.



Pilot, co-pilot, meteorologist and flight dispatcher have thoroughly pre-planned the entire flight, taking into consideration weather conditions, payload, fuel consumption, route, speed and altitude. The complete flight plan is filed with Airways Traffic Control so radio contact between the airplane and land and sea stations can be maintained continuously throughout the entire trip.



First step in transforming miles into minutes



FLIGHT TIME MINUS TWENTY MINUTES

Food and beverages are taken aboard along with current magazines, newspapers, chewing gum, blankets, pillows, cigarettes, electric shavers, playing cards, diapers, baby food, stationery portfolios and more than 1000 other passenger comfort and entertainment items.



Cabin attendants board the aircraft to see that everything is in readiness for the passenger. At the same time, the flight crew meets to discuss the results of the flight engineer's comprehensive inspection of the entire airplane.



When everything is in readiness, the ticket agent announces over the airport public address system, "Attention . . . your Super Constellation is ready for boarding, all aboard please."



*The stairway that leads to speed, comfort
and dependability*



FLIGHT TIME MINUS TWO MINUTES

While the cabin attendants make the passengers comfortable, the ground crew is busy loading the final pieces of baggage into the 694 cubic feet of storage space provided in the lower cargo compartments of the Super Constellation.



As soon as the doors are secured, the ground crew chief gives the all clear signal and four mighty engines come to life. Through radio contact with the airport control tower, taxi instructions are received and the giant transport moves carefully from the airport loading ramp.

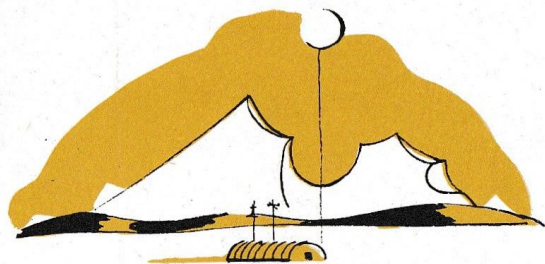


Before entering the main take-off runway, a stop is made at the "run-up" area where engines and propellers are given a final functional check. All control surfaces are operated. The crew completes the last of sixty-nine pre-flight inspections

by testing the electrical, electronic, pneumatic and hydraulic systems. When certain that all controls and instruments are functioning properly, the pilot radios the control tower, identifies the aircraft and requests permission to take off.

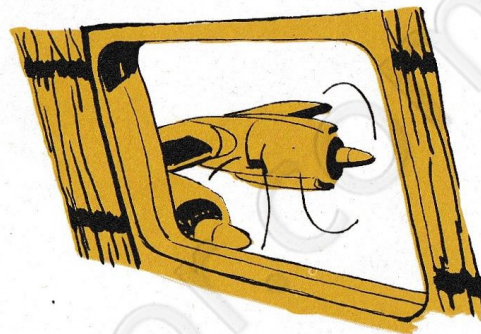


The magic moment is at hand



FLIGHT TIME

Take-off instructions, which include current barometric pressures, wind direction and wind velocity, are radioed to the pilot . . . throttles are eased forward and 13,000 horsepower roar into action. Seconds later more than 68 tons of majestic airplane take to the air, climbing into the sky at the rate of more than 1000 feet per minute.



As the aircraft approaches cruise altitude, the reassuring hum of the engines seems to cease momentarily. This occurs when the pilot changes the engine superchargers from low blower to high blower, comparable to shifting gears in an automobile.



When your Super Constellation reaches "on top of the weather" altitude, the pilot levels the aircraft and reduces the throttle settings until the point of maximum engine efficiency is reached . . . a power setting that provides cruising speeds of more than 330 miles per hour. The pilot, co-pilot and flight engineer maintain constant vigilance over

the many different instruments and controls to assure smooth and comfortable flying. Although the Super Constellation flies at an altitude of 22,000 feet, passengers experience no discomforts . . . no ear popping. Temperature, pressure, rate of pressure change, air distribution, ventilation and humidity are completely controlled by the air conditioning system.



Unparalleled luxury...for your enjoyment

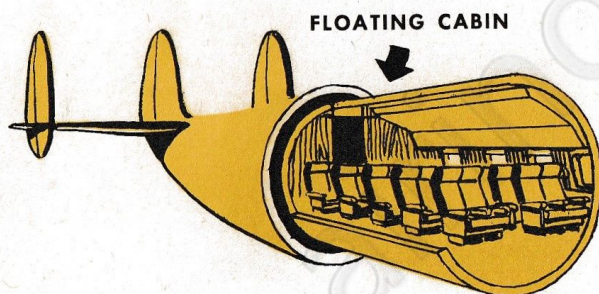


FLIGHT TIME PLUS MILES OF PLEASURE

At mealtime, dinner trays are placed in the "penetrating heat" oven. Salads, beverages and desserts are taken from the galley refrigerator to provide you with an epicure's delight from the most efficient "kitchen" in the world.



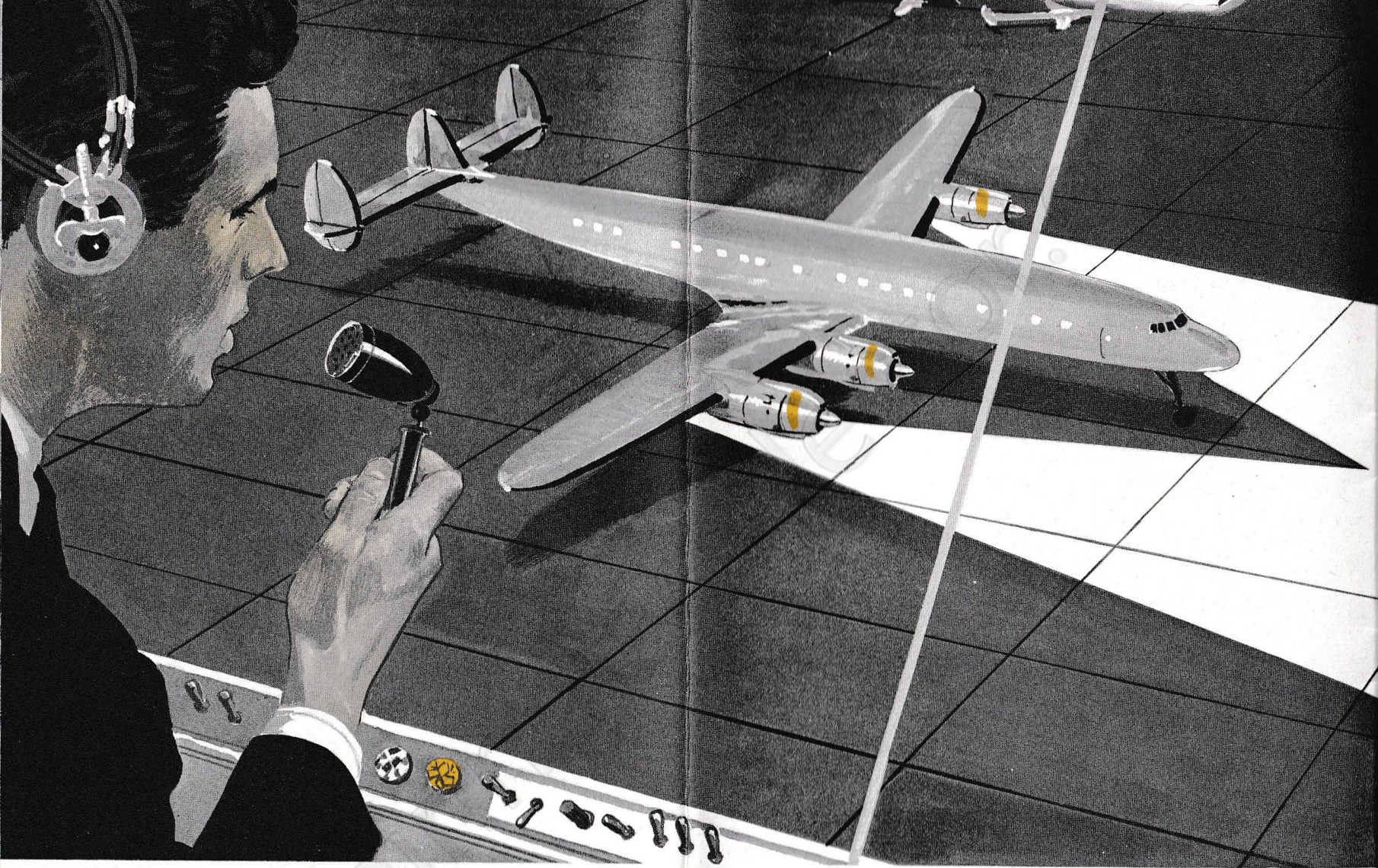
In flight, the Super Constellation passenger is served the finest of taste-tempting foods . . . a complete variety of beverages, meticulously prepared food and congenial service is yours while you view the splendor of the world thousands of feet below.



During your flight, you'll become oblivious of the engines only a few yards away . . . the powerful "outside" roar is reduced to a reassuring hum by sound-proofing and insulation which surrounds the "floating cabin" of the Super Constellation. Normal conversation can be carried on anywhere inside the spacious interior.



In the flight station, pilot, co-pilot and flight engineer make a continuing routine check of the instruments . . . air speed indicator, altimeter, compass and automatic direction finder. As the check points are reached, the pilot makes routine radio contact. This standard operating procedure has helped the airlines of the world achieve an outstanding record for safety and dependability.



Return to reality



LANDING TIME

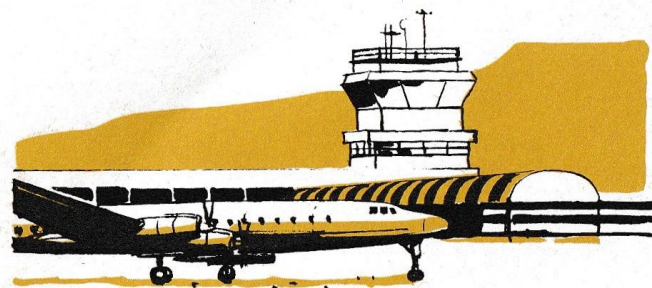
Radio contact is made with the airport control tower for landing instructions. Clear visibility will allow the pilot to make a visual landing approach. However, the facilities of modern terminals, in conjunction with the more than thirteen-hundred pounds of electronic equipment carried in the Super Constellation, eliminate the hazards of instrument landings regardless of weather conditions.



A slight thump can be heard inside the airplane as the tricycle landing gear is extended and locked into position. Seconds later, flaps begin to extend from the trailing edge of the wings, accompanied by the humming sound of hydraulic cylinders being actuated. These flaps give the Super Constellation more "lift," permitting it to land more slowly.



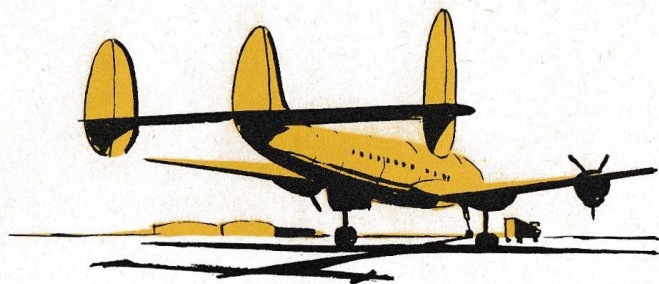
Throttles are closed as the wheels of the Super Constellation settle on the runway. Immediately, the pilot reverses the propellers and reopens the throttles, creating a powerful braking action felt throughout the aircraft. Once again, a steady humming sound is heard as wing flaps are retracted.



Taxi instructions are transmitted to the pilot and, as the huge transport is maneuvered toward the unloading ramp, experienced ground crews prepare the passenger stairway and baggage carts for unloading. Another day in the life of a Super Constellation nears completion . . . with it an incomparable travel experience for its passengers.



The perfect end to a heavenly day

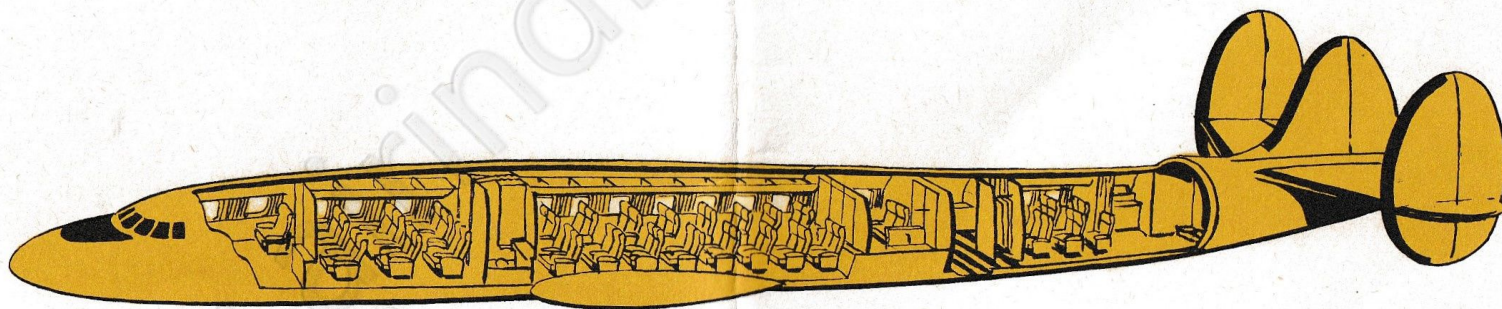


LANDING TIME PLUS TIME FOR THOUGHT

As soon as passengers debark and baggage is unloaded, the ground crew tows the airplane to the hangar where the unending cycle of maintenance, servicing and inspection is resumed . . . the start of a new day in the life of a Super Constellation.



During your flight you have traveled at speeds exceeding five miles a minute. The hydraulic power boost control system gave the pilot effortless control of the aircraft . . . the pneumatic de-icing system kept the airplane free of restrictions and at peak operating efficiency.



The famous triple tail provided maximum stability; surplus power gave the crew positive control of the giant transport during all phases of flight; and electronic equipment made faultless communication and navigation possible.

These superiorities, coupled with the luxurious interior appointments and arrangement, combine speed, range, comfort and dependability into the Super Constellation, the world's standard for modern air travel.



"Fly with me"

18

a
day
in the life of
an AIR INDIA
International
Super
Constellation...

