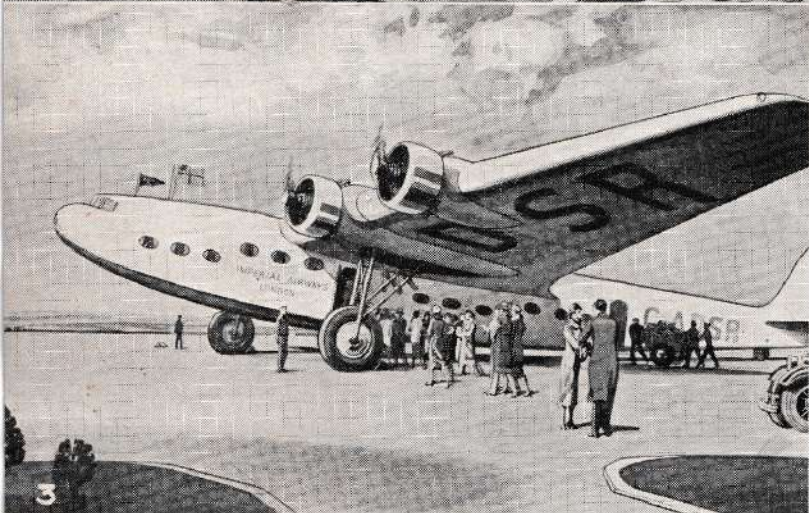
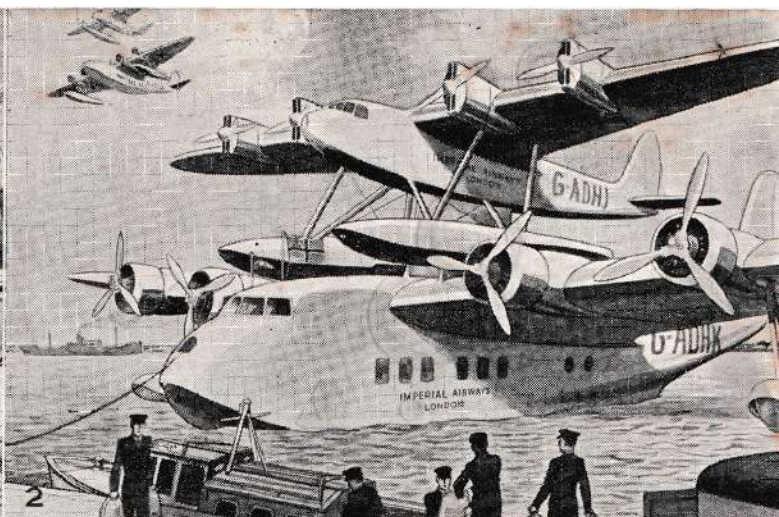
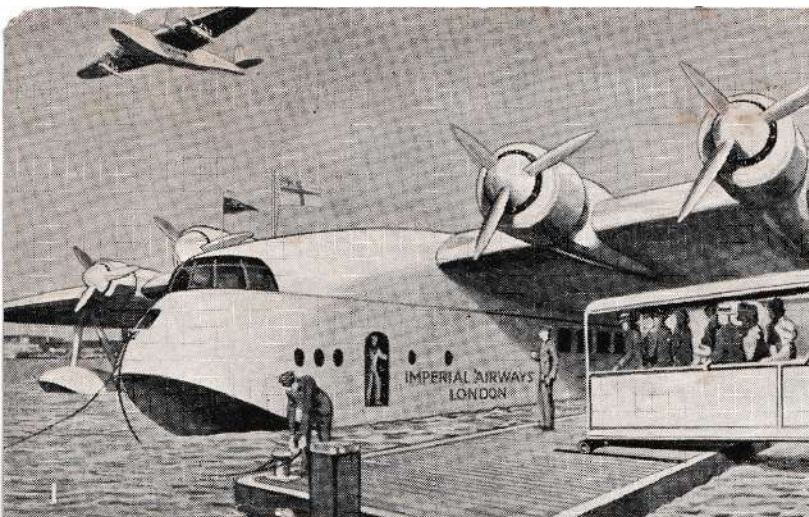


A VERY HAPPY CHRISTMAS TO YOU

IMPERIAL AIRWAYS GAZETTE

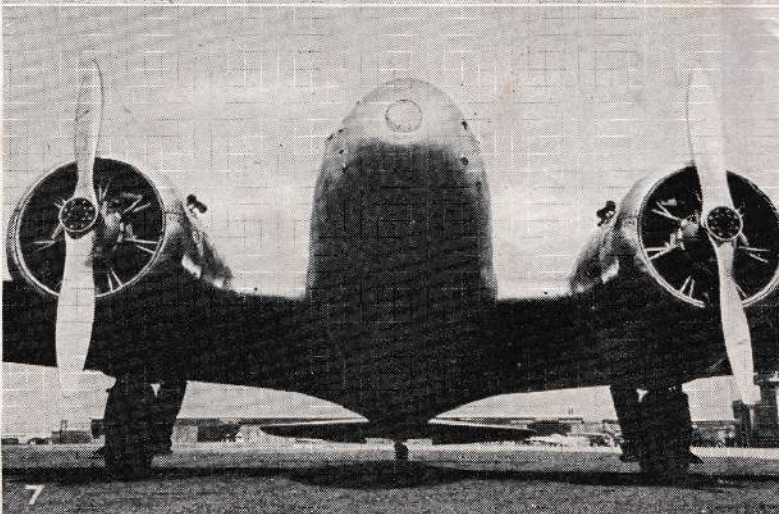
DECEMBER 1935 · NO. 2 · VOL. 7

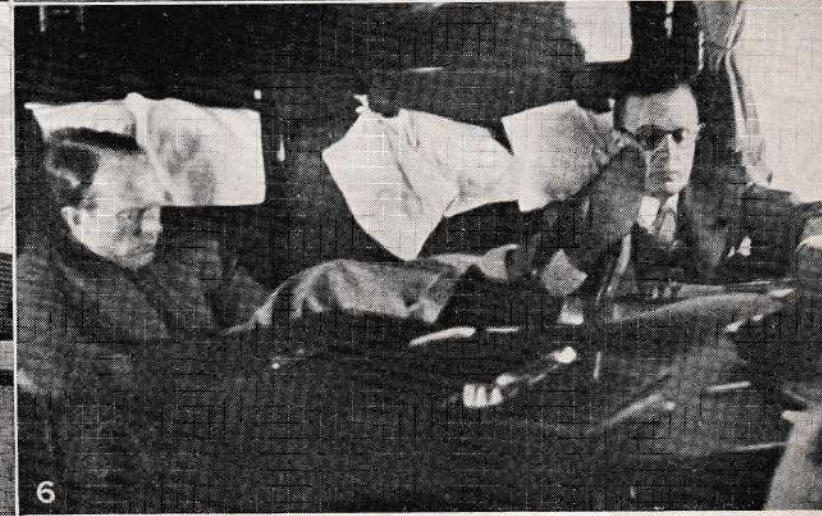
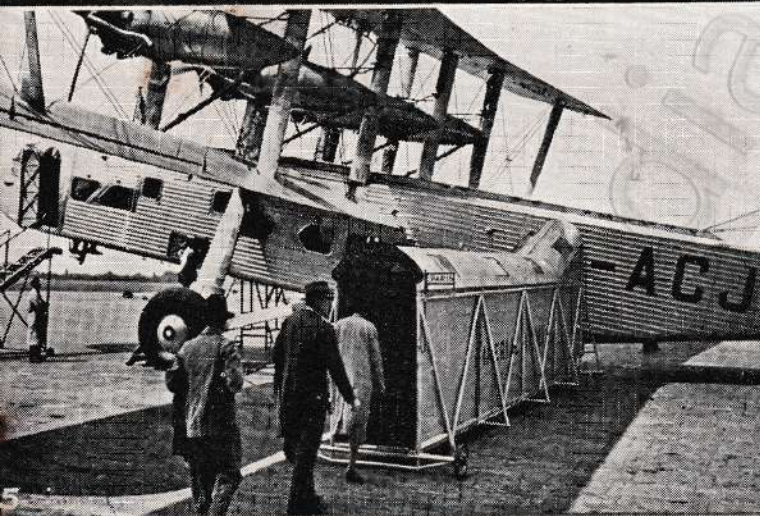
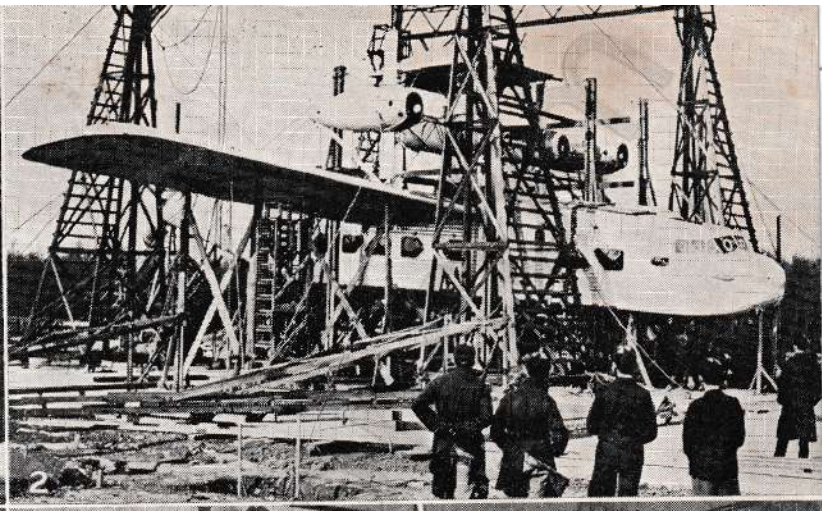
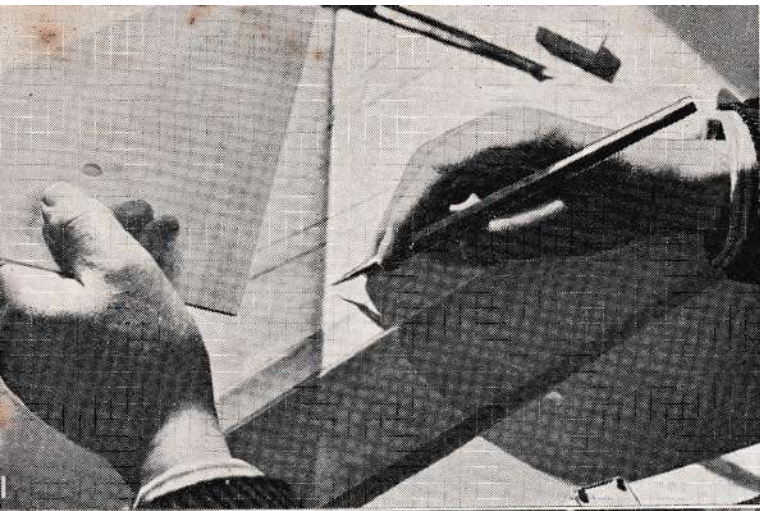




AIR LINERS OF IMPERIAL AIRWAYS

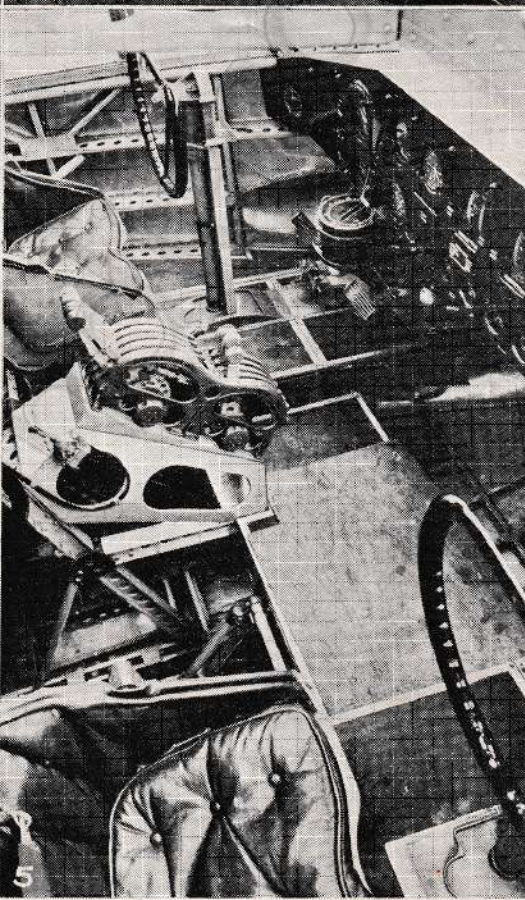
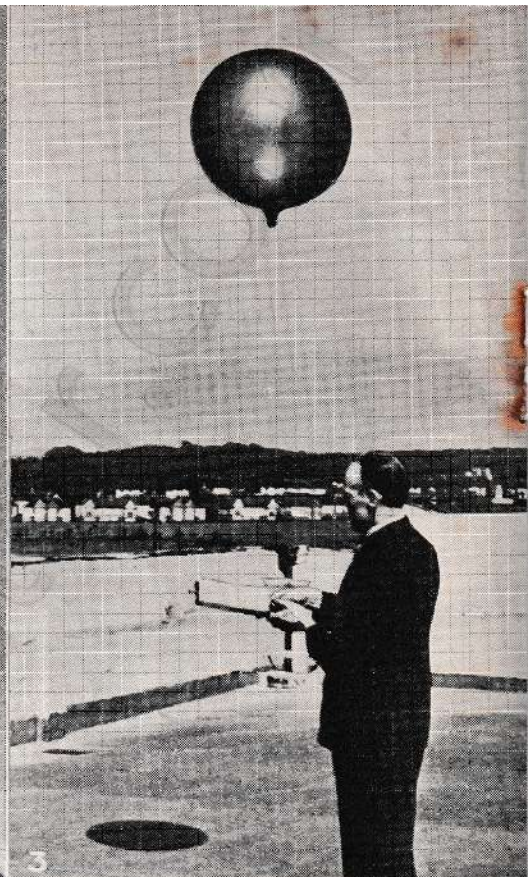
- 1 Empire flying-boat now under construction (Imperial Airways)
- 2 The Mayo composite aircraft now under construction (Imperial Airways)
- 3 A four-engined Empire air liner now building (Imperial Airways)
- 4 An admiring crowd at Brisbane (The Sun)
- 5 Past and present (F. T. Colby)
- 6 Some of the passengers of the Heracles (Central Press)
- 7 The Avalon, 175 m.p.h. (Fox Photos)





FROM BLUE PRINT TO PULLMAN COMFORT

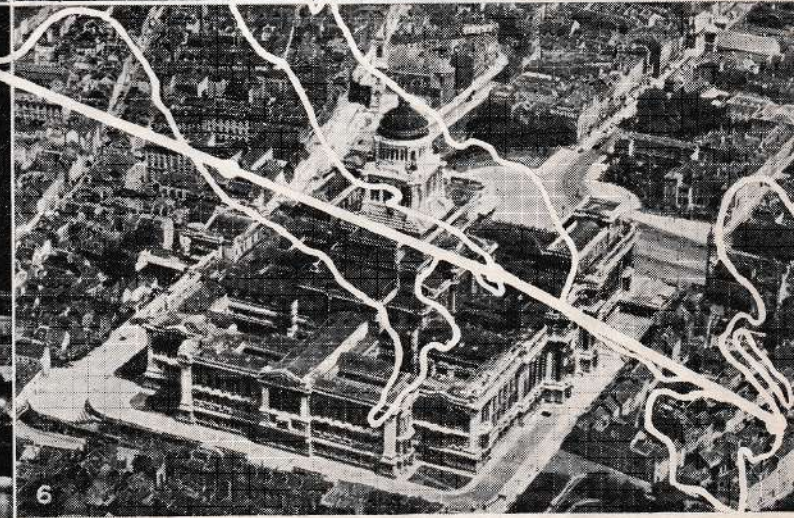
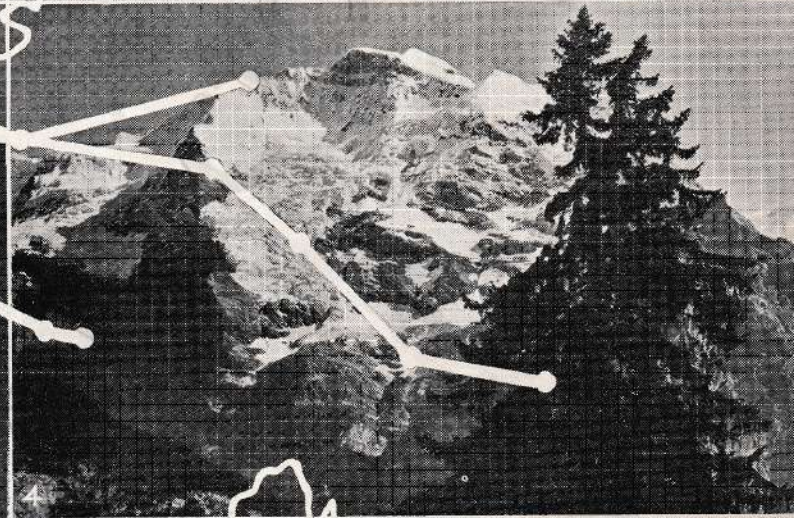
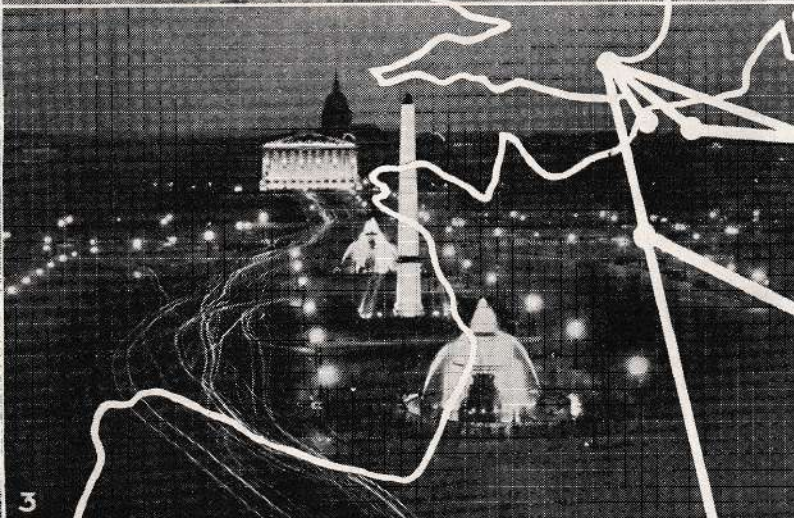
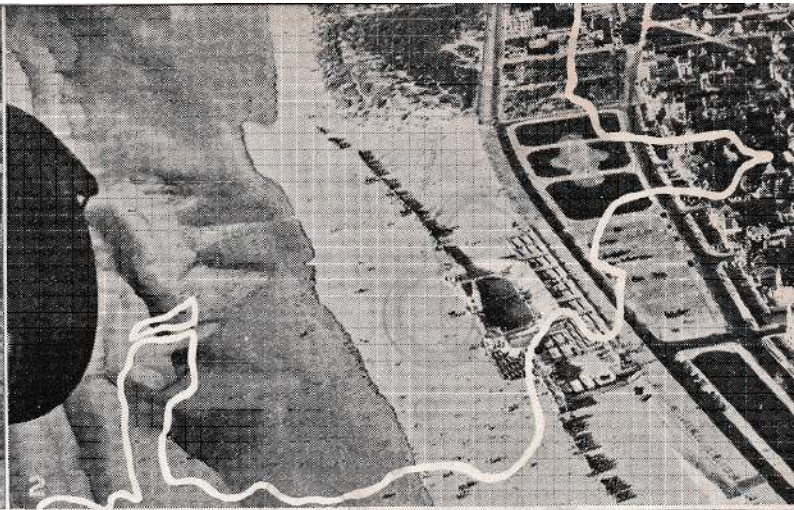
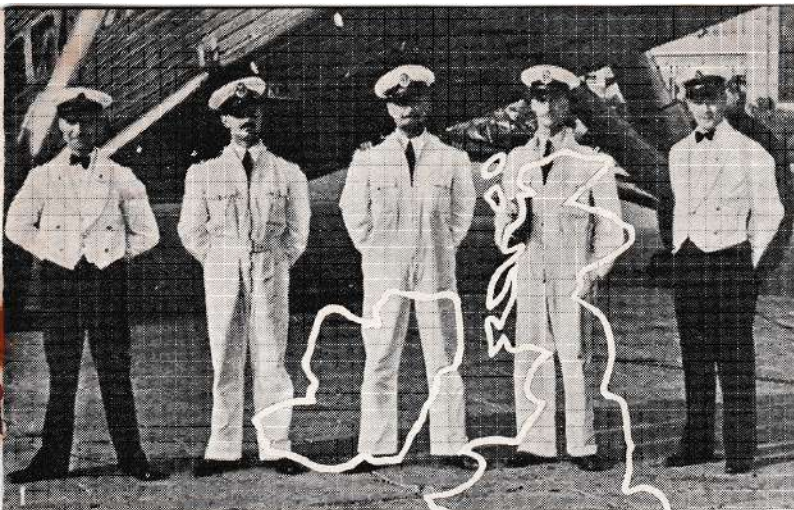
- 1 - Design (Fox Photos)
- 2 - Construction (Short Bros. (Rochester and Bedford) Ltd.)
- 3 - To Paris while you lunch (Jarché)
- 4 - A corner of one of the cabins of the Scylla (Jarché)
- 5 - Passengers going aboard the Scylla (Jarché)
- 6 - At peace with the world (Jarché)
- 7 - The end of a perfect lunch (Jarché)



WATCH AND WARD

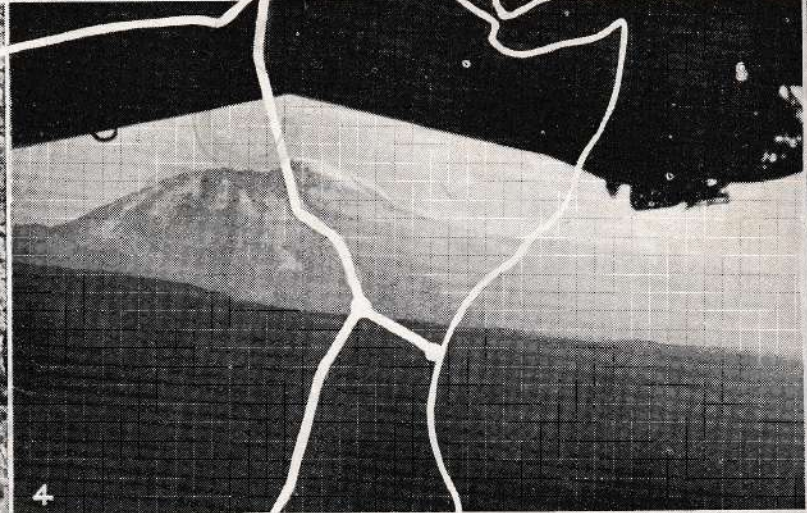
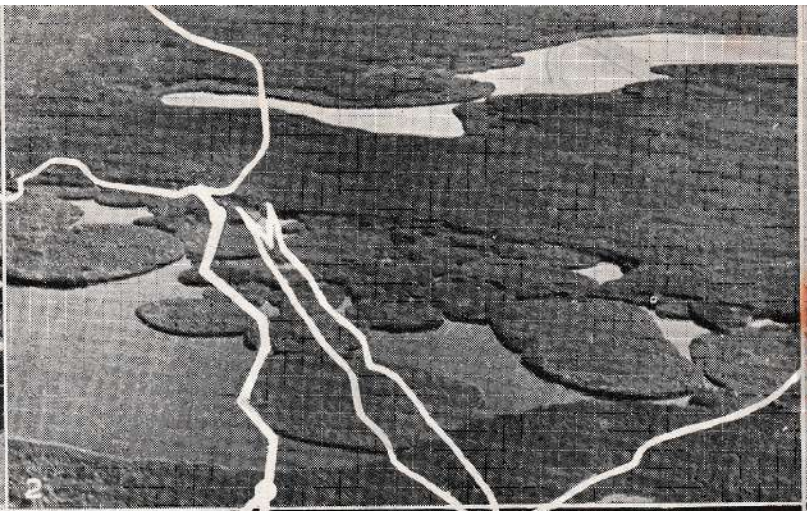
- 1 Plotting the position of an air liner (Temple Press)
- 2 A Neon light beacon (Moholy-Nagy)
- 3 Balloon for testing weather conditions (Moholy-Nagy)

- 4 An illuminated wind indicator (Moholy-Nagy)
- 5 The bridge of an air liner (Fox Photos)
- 6 An air port flood-lit (General Electric Co. Ltd.)



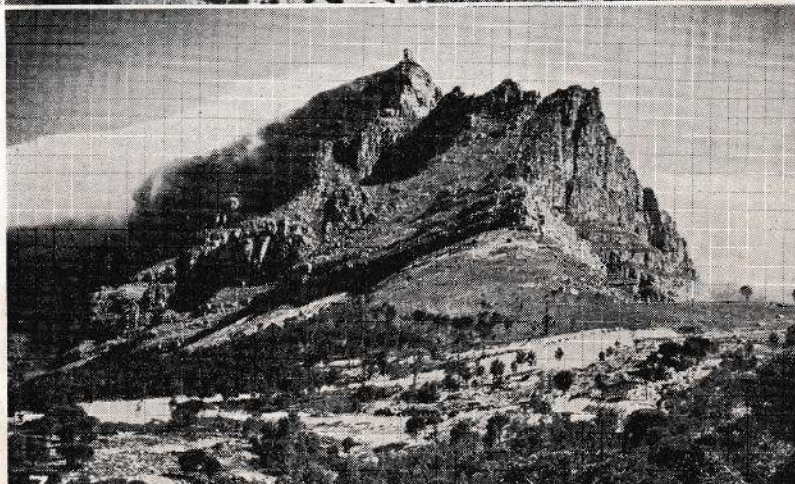
EUROPE

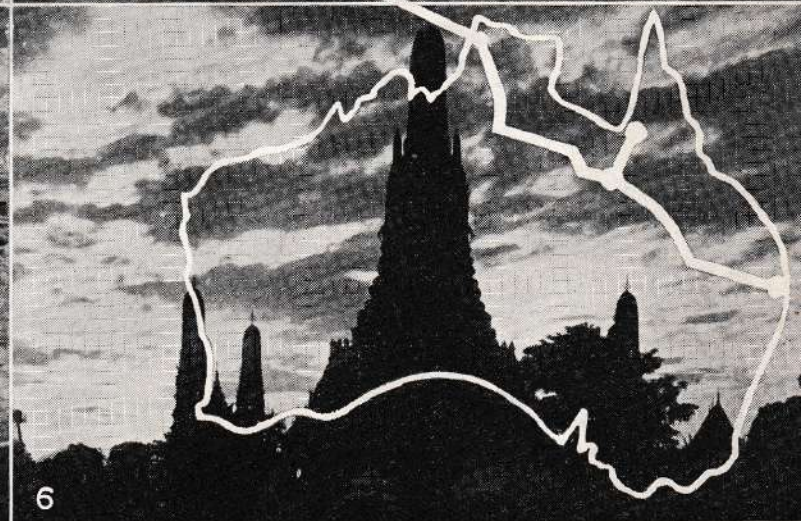
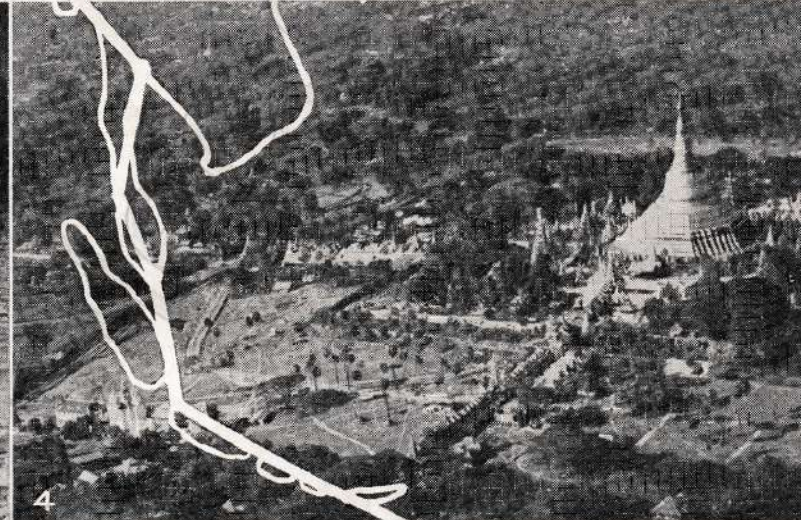
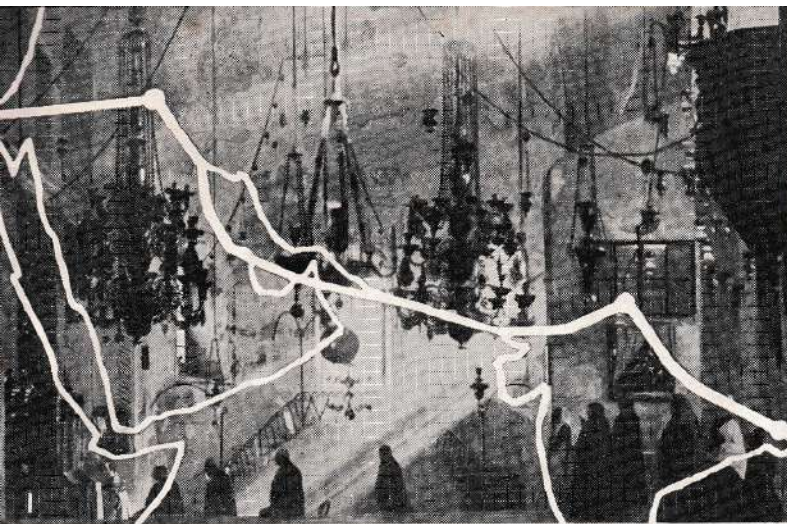
- 1 The officers and crew of an Imperial Airways' air liner (Jarché)
- 2 Le Touquet (Charles E. Brown)
- 3 Paris (the queer marks are made by motor car lights)
(Office Français de Tourisme)
- 4 Jungfrau (E. Gyzer)
- 5 Budapest (Municipal Tourist Office, Budapest)
- 6 Brussels—Palais de Justice (Imperial Airways)
- 7 Athens—the Acropolis (The Times)



AFRICA

- 1 *The Citadel, Cairo* (Imperial Airways)
- 2 *Sudd (floating vegetation) on the Nile* (Imperial Airways)
- 3 *Elephants in the Sudan* (Imperial Airways)
- 4 *Mount Kilimanjaro—on the borders of Tanganyika and Kenya*
(The American Colony Photo Dept.)
- 5 *A Kikuyu man—Kenya Colony* (British Instructional Films Ltd.)
- 6 *Native huts, Rhodesia* (High Commissioner, Southern Rhodesia)
- 7 *Table Mountain, Cape Town. Note the 'tablecloth' of cloud*
(South African Railways and Harbours)





PALESTINE, 'IRAQ, PERSIAN GULF, INDIA AND AUSTRALIA

- 1 *The Church of the Nativity, Bethlehem*
(The American Colony Photo Dept.)
- 2 *A Falconer—the Persian Gulf* (British Instructional Films Ltd.)
- 3 *An infra-red photograph of the Himalaya 270 miles away*
(The Times)
- 4 *Shwe Dagon Pagoda, Rangoon* (The Times)
- 5 *The Jungles of Malaya* (The Times)
- 6 *The Wat Arun Pagoda, Bangkok* (Imperial Airways)
- 7 *Brisbane* (The Telegraph, Brisbane)

